

PORT SIZE:
P1, P2, T1, A-B : G1/2"
T2(co), T3 : G3/4"

TECHNICAL SPECIFICATIONS:

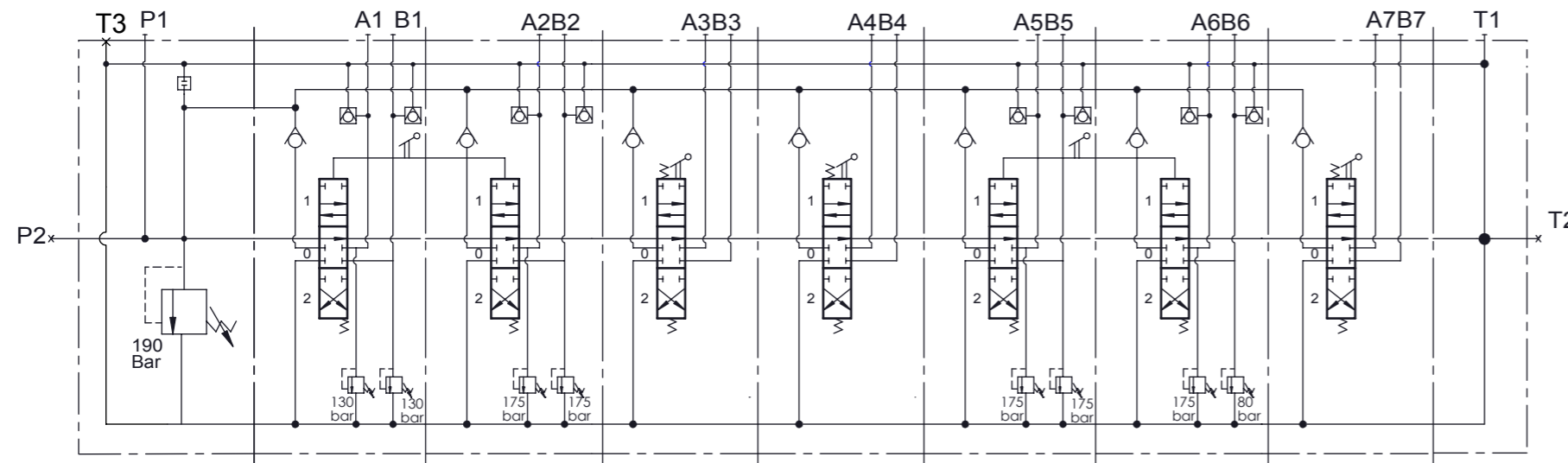
Number of spool : 7
Max. Flow : 80 lt/min
Nominal Flow : 70 lt/min
Operating Pressure : 190 Bar
Max. Operating Pressure : 315 Bar
Max. Back Pressure : 30 Bar

TEST SPECIFICATIONS :

Test with Petroleum SAE32 Hydraulic Oil at 40±2°C
Main Relief Valve to be Set 190 Bar At 70 lt/min
All anti-cavitation and antishock relief valve under main relief pressure to be set at 70lt/min.
Leakage Rates
Internal leakage of 4 to 10cc/min at 100 Bar 32cSt 40°C

WORKING CONDITIONS:

Recommended Oil Viscosity Range : 10 cSt to 75 cSt
Recommended Oil Filtering : β10 ≥ 75
Recommended Fluid Tempe.Range : -20°C to +80°C
Enviromental Temperature Range : -35°C to +60°C
Max.Contamination Level : Class 10 (NAS 1638)
19/16(ISO 4406)



VALF KV177
/IL-005(190)-B01
/BSC1ST1V7(A130B130)K7T
/BSC1ST1V7(A175B175)K7T
/2XBSC1ST1T
/BSC1ST1V7(A175B175)K7T
/BSC1ST1V7(A175B80)K7T
/BSC1ST1T
/C

