

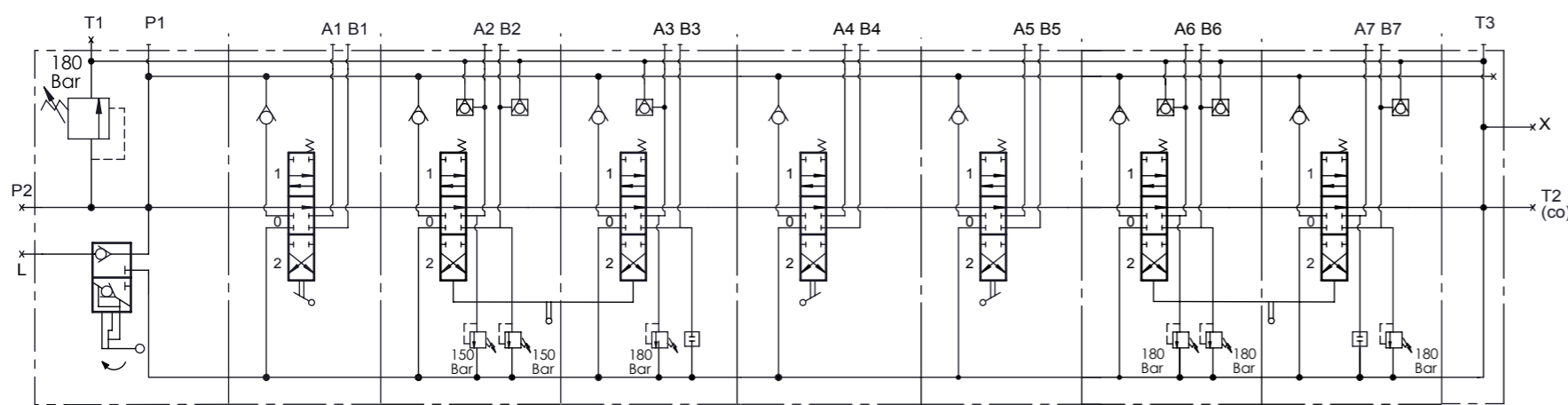
PORT SIZE:
 P1, P2, T1, A-B : G1/2"
 T3, T2(co) : G3/4"
 X, L : G1/4"

TECHNICAL SPECIFICATIONS:
 Number of spool : 7
 Max. Flow : 80 lt/min
 Nominal Flow : 70 lt/min
 Operating Pressure : 180 Bar
 Max. Operating Pressure : 315 Bar
 Max. Back Pressure : 30 Bar

TEST SPECIFICATIONS :
 Test with Petroleum SAE32 Hydraulic Oil at 40±2°C
 Main Relief Valve to be Set 180 Bar At 70 lt/min
 Under main relief valve pressure antischocks and anti-cavitations to be set at 70 lt/min

Leakage Rates
 Internal leakage of 4 to 10cc/min at 100 Bar 32cSt 40°C

WORKING CONDITIONS:
 Recommended Oil Viscosity Range : 10 cSt to 75 cSt
 Recommended Oil Filtering : $\beta_{10} \geq 75$
 Recommended Fluid Tempe. Range : -20°C to +80°C
 Enviromental Temperature Range : -35°C to +60°C
 Max. Contamination Level : Class 10 (NAS 1638) 19/16(ISO 4406)



VALF KV177
 /IL-004(180)-BO1
 /BSC1ST1
 /BSC1ST1V7(A150B150)K7
 /BSC1ST1V19(A180)K7
 /2XBSC1ST1K1
 /BSC1ST1V7(A180B180)K7
 /BSC1ST1V20(B180)K7
 /C

