

PORT SIZE:

P1, P2, T1, A-B : G1/2"
 T2, T3 : G3/4"

TECHNICAL SPECIFICATIONS:

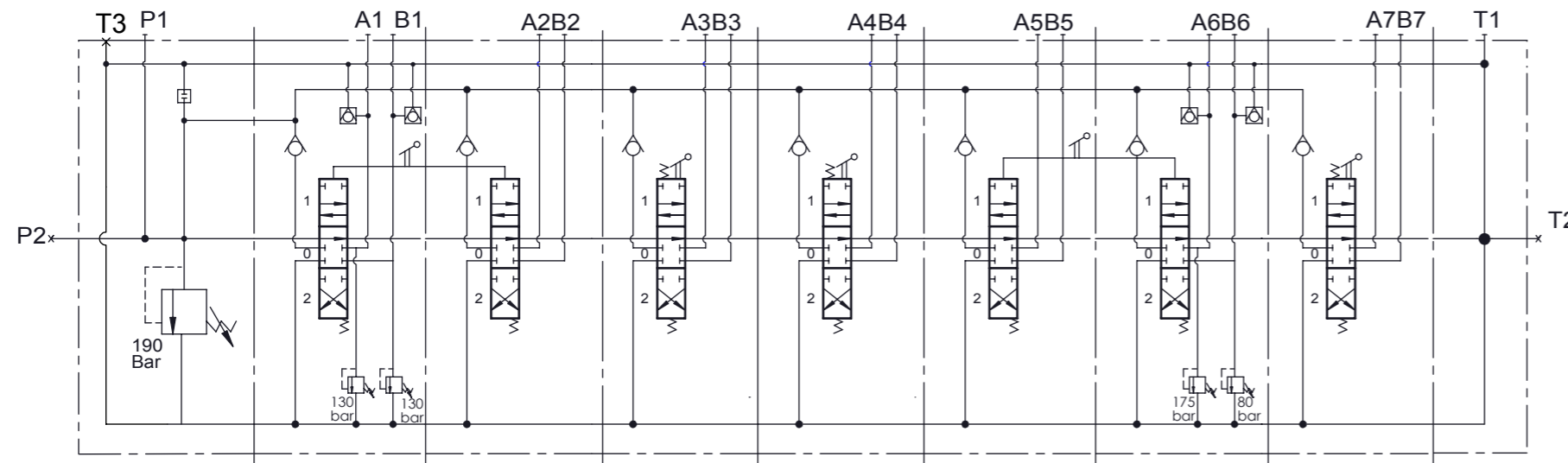
Number of spool : 7
 Max. Flow : 90 lt/min
 Operating Pressure : 190 Bar
 Max. Operating Pressure : 300 Bar
 Max. Back Pressure : 30 Bar

TEST SPECIFICATIONS :

Test with Petroleum SAE32 Hydraulic Oil at 40±2°C
 Main Relief Valve to be Set 180 Bar At 70 lt/min
 All anti-cavitation and antishock relief valve under main relief pressure to be set at 70lt/min.
 Leakage Rates
 Internal leakage of 4 to 10cc/min at 100 Bar 32cSt 40°C

WORKING CONDITIONS:

Recommended Oil Viscosity Range : 10 cSt to 75 cSt
 Recommended Oil Filtering : β10 ≥ 75
 Recommended Fluid Tempe.Range : -20°C to +80°C
 Enviromental Temperature Range : -35°C to +60°C
 Max.Contamination Level : Class 9 (NAS 1638)
 19/16(ISO 4406)



VALF KV177/IL-001(190)-B01/BSC1ST1V7(A130B130)K7T/BSC1ST1K7T/2XBSC1ST1T/
 BSC1ST1K7T/BSC1ST1V7(A80B175)K7T/BSC1ST1T/B

