

PORT SIZE:

P1, P2, T1, T2, T3, A-B : G3/4"
 X : G1/4"

TECHNICAL SPECIFICATIONS:

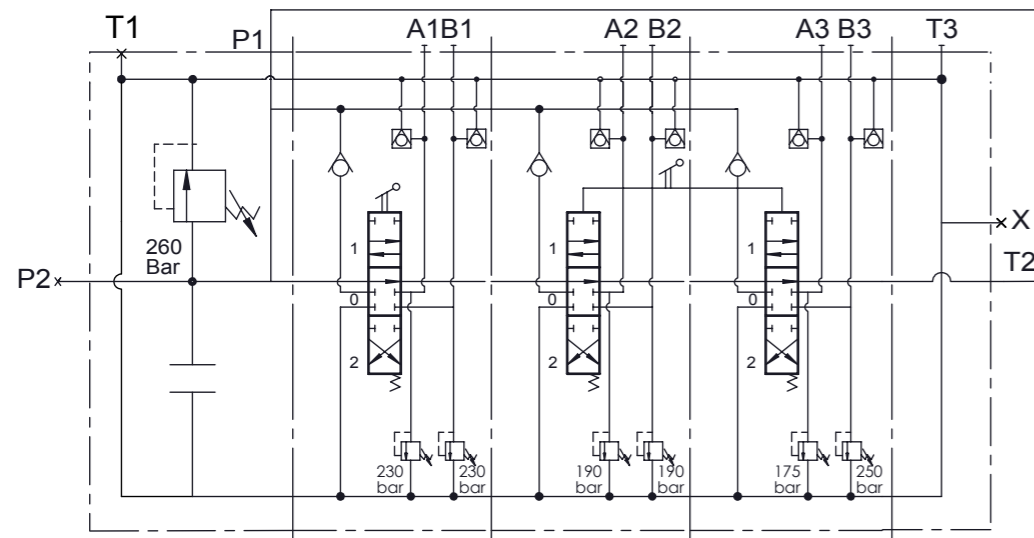
Number of spool : 3
 Max. Flow : 80 lt/min
 Operating Pressure : 260 Bar
 Max. Operating Pressure : 315 Bar
 Max. Back Pressure : 30 Bar

TEST SPECIFICATIONS :

Test with Petroleum SAE32 Hydraulic Oil at 40±2°C
 Main Relief Valve to be Set 260 Bar At 70 lt/min
 Leakage Rates
 Internal leakage of 4 to 10cc/min at 100 Bar 32cSt 40°C
 (only spool leakage)

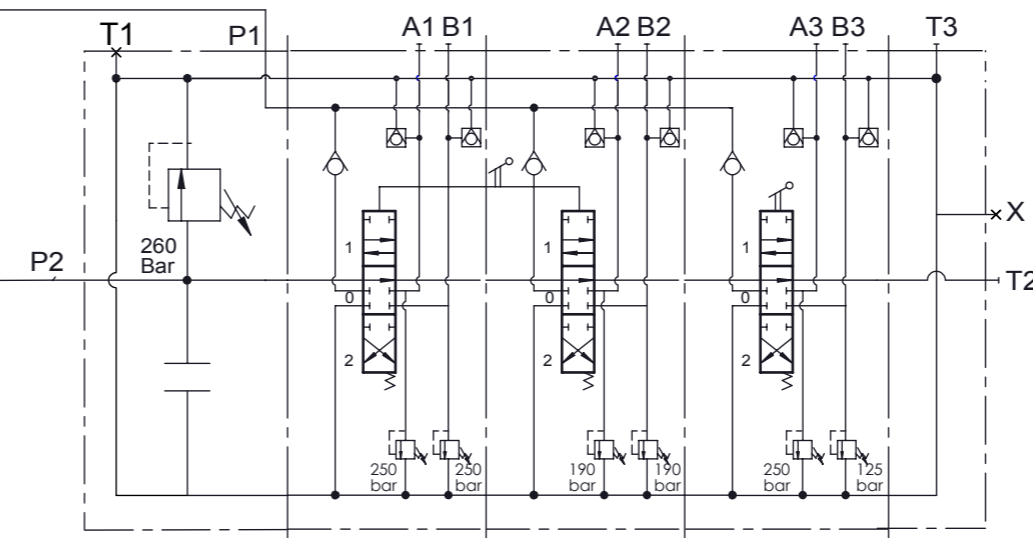
WORKING CONDITIONS:

Recommended Oil Viscosity Range : 10 cSt to 75 cSt
 Recommended Oil Filtering : β10 ≥ 75
 Recommended Fluid Tempe. Range : -20°C to +80°C
 Enviromental Temperature Range : -35°C to +60°C
 Max. Contamination Level : Class 9 (NAS 1638)
 19/16(ISO 4406)



KV173

VALF KV173-IL003(260)-C01
 /CSC1ST1V7(A230B230)K1T
 /CSC1ST1V7(A190B190)K7T
 /CSC1ST1V7(A175B250)K7T
 /C-H



KV173

VALF KV173-IL003(260)-C02
 /CSC1ST1V7(A250B250)K7T
 /CSC1ST1V7(A190B190)K7T
 /CSC1ST1V7(A250B125)K1T
 /C-H

