

KV 17

sectional directional control valve
dilimli hidrolik yön kontrol valfi



Index - İçindekiler

| | |
|---|-----|
| Product Features <i>Ürün Özellikleri</i> | 92 |
| General Specifications <i>Genel Özellikler</i> | 92 |
| Order Coding <i>Sipariş Kodlama</i> | 93 |
| Dimensional Data <i>Ölçüsel Bilgi</i> | 94 |
| Performance Data <i>Performans Eğrileri</i> | 95 |
| Hydraulic Specification <i>Hidrolik Devre</i> | 96 |
| Inlet Options <i>Basınç (P) Hattı Opsiyonları</i> | 97 |
| Working Section <i>Dilim</i> | 100 |
| Spool Positioners <i>Sürgü Kontrolleri</i> | 101 |
| Spool Options <i>Sürgü Tipleri</i> | 107 |
| Auxiliary Valves <i>Yardımcı Valfler</i> | 109 |
| Lever Types <i>Sap Tipleri</i> | 111 |
| Outlet Options <i>Tank (T) Hattı Opsiyonları</i> | 114 |

General Specifications

Genel Özellikler

Product Features

KV17 is a compact, flexible and robust control valve for operating pressures up to 350 bar and pump flows up to 90 lpm.

The valve is designed for high performance for open and closed center hydraulic systems

Accessories

Valve is equipped with an adjustable main relief valve
Available in parallel (in standard), series, tandem circuit
Load Hold Check valves in each section
Auxiliary Valves
Wide range of spool options
Interchangable Ø16 mm Spools
Carry-over and closed center option
Load Sense Option

Controls

Manual, Pneumatic, Electro-Pneumatic, Hydraulic, Electro-Hydraulic, Inlet proportional, Electro-Hydraulic Proportional, Mechanical Joystick and Remote Cable Control

Özellikler

KV17 serisi 90 lt/dk ve 350bar'a kadar maksimum performansı gösteren, gelişmiş özellikleriyle birçok mobil uygulama için ideal kontrol kumandasıdır.

Aksesuarlar

Ayarlanabilir Ana Emniyet Valfi
Paralel, Seri, Tandem Devre İmkanı
Her Dilimde Yük Tutma Valfleri
Yardımcı Valfler
Çeşitli Sürgü Tipleri
Değiştirilebilir Ø16 mm Sürgüler
Carry-over ve Kapalı Merkez İmkanı
LS Opsiyonu

Kontrol

Manuel, Pnömatik, Elektro-Pnömatik, Hidrolik, Elektro-Hidrolik, Elektro-Hidrolik Oransal, Giriş Oransal, Mekanik Joystick, Halat Kontrol

Standard Material Specifications Standard Malzeme Özellikleri

High Resistance Cast Iron Body *Döküm Gövde*
Hard Chromium Plated Interchangable Spools *Sertleştirilmiş Krom Kaplama Sürgüler*
Steel spring caps *Çelik Yay Kapakları*
Aluminium Lever Caps *Alüminyum Sap Kapakları*
NBR Seals *NBR Sızdırmazlık Elemanları*

Working Conditions Çalışma Şartları

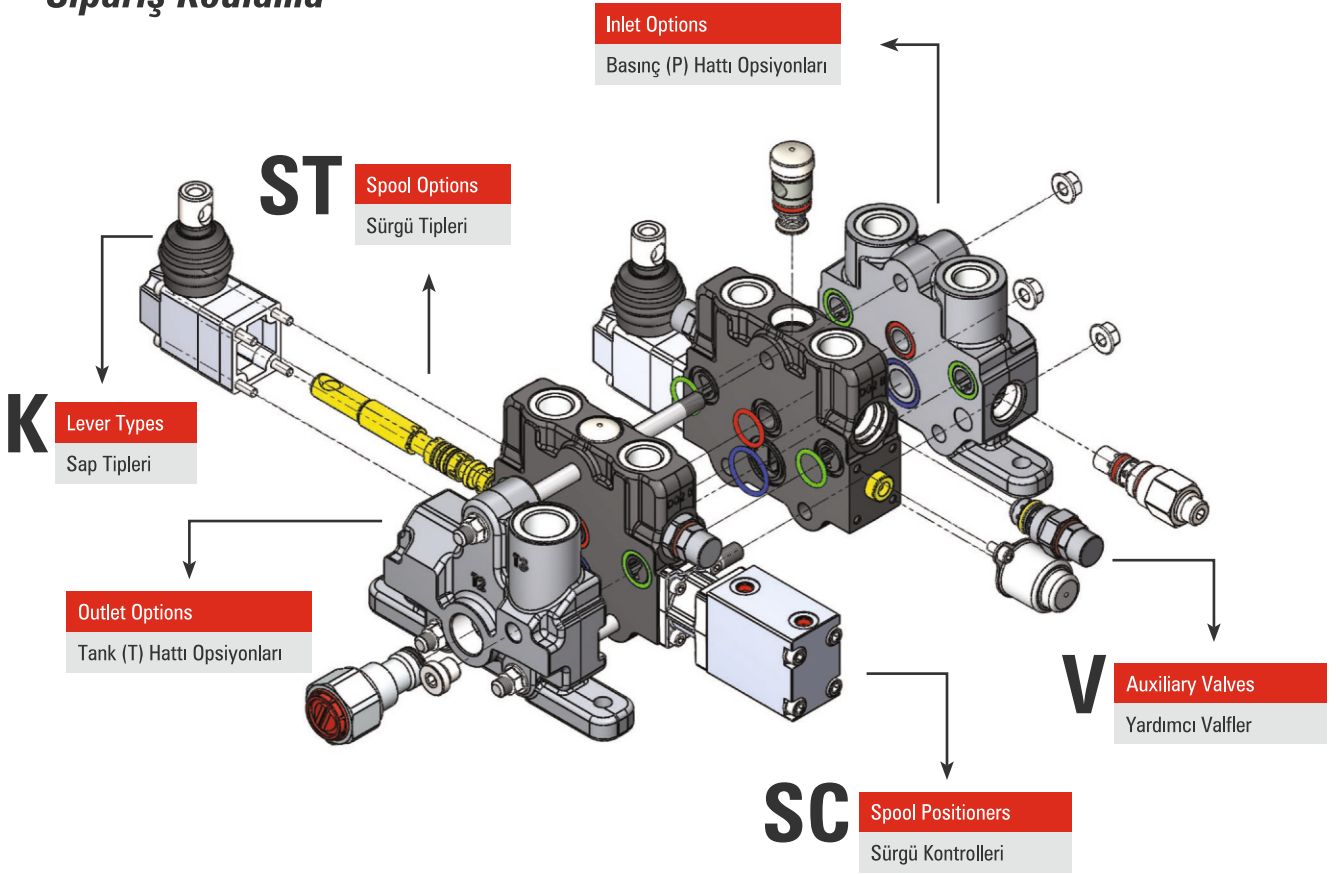
| | |
|--|---|
| Recommended Oil Viscosity Range <i>Önerilen Yağ Vizkozite Aralığı</i> | 10 cSt to 75 cSt |
| Recommended Oil Filtering <i>Önerilen Yağ Filtrasyonu</i> | β 10 ≥ 75 |
| Recommended Fluid Temperature Range <i>Önerilen Çalışma Sıcaklığı (°C)</i> | -20 to +80 |
| Environmental Temperature Range <i>Önerilen Ortam Sıcaklığı (°C)</i> | -35 to +60 |
| Maximum Contamination Level <i>Maksimum Kirlilik Seviyesi</i> | Class 10 (NAS 1638) 19/16 (ISO 4406) |

Technical Specifications Teknik Özellikler

| | | |
|--|--|--|
| Nominal Flow <i>Debi</i> | 80 lpm | 21 US gpm |
| Number of Spools <i>Dilim Sayısı</i> | 1 - 9 | |
| Maximum Working Pressure <i>Maksimum Çalışma Basıncı</i> | 350 bar 250 bar in Series Circuit | 5000 psi 3600 psi in Series Circuit |
| Maximum Back Pressure <i>Maksimum Tank Hattı Basıncı</i> | 30 bar | 430 psi |
| Internal Leakage <i>İç Kaçak Değeri</i> | 4 cc - 9 cc (100 Bar; 32 cSt, 40 °C) | 0,24 - 0,54 in³/m (1450 psi; 32 cSt, 104°F) |

Order Coding

Sipariş Kodlama



KV172 - IL-001(180)-B01 / - B SC1 ST11 V13 K1 / B SC15 ST1 V13 K1 / B - H

1

2

3

4

1

Valve Type Valf Tipi

KV17 Valve Series Valf Serisi
2 Number of Spools Sürgü Sayısı

2

Inlet Options Pompa (P) Hattı Opsiyonları

IL Side of Inlet Section Basınç Kapağı Yönü
001 Configuration of Inlet Section Basınç Kapağı Konfigürasyonu
180 Pressure Setting Basınç Değeri
B01 Inlet Position and Port Thread Bağlantı ve Paso Tipi

3

Working Section Dilim

B Port Thread Port ölçüleri
SC1 Spool Positioners Sürgü Kontrolleri
ST11 Spool Options Sürgü Tipleri
V13 Auxiliary Valves Yardımcı Valfler
K1 Lever Types Sap Tipleri

4

Outlet Options Tank (T) Hattı Opsiyonları

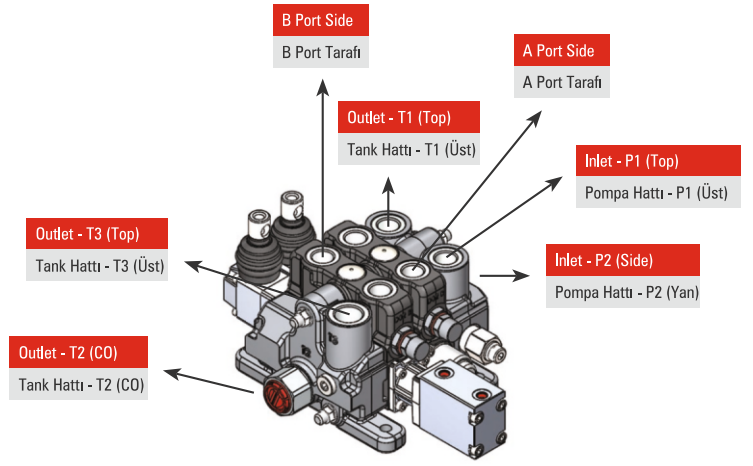
B Port Thread Port ölçüleri
H Outlet Options Tank Hattı Opsiyonları

This part must be coded separately for each working section. If adjacent sections are identical then code the first section and put number of identical sections with a cross. Example for 3 identical sections; KV174/IL-001(180)-B01/BSC1ST1V7(A160B160)K1/3XBSC4ST1V1(A140B150)K3/B-H

Bu bölümdeki kodlama her dilim için ayrı ayrı yapılmalıdır. Eğer birbirini takip eden ve aynı konfigürasyona sahip dilim isteniyorsa, aynı dilimler, dilim sayısı başa getirilip yanına çarpı konacak şekilde kodlanabilir. Örnek Kodlama; KV174/IL-001(180)-B01/BSC1ST1V7(A160B160)K1/3XBSC4ST1V1(A140B150)K3/B-H

Dimensional Data

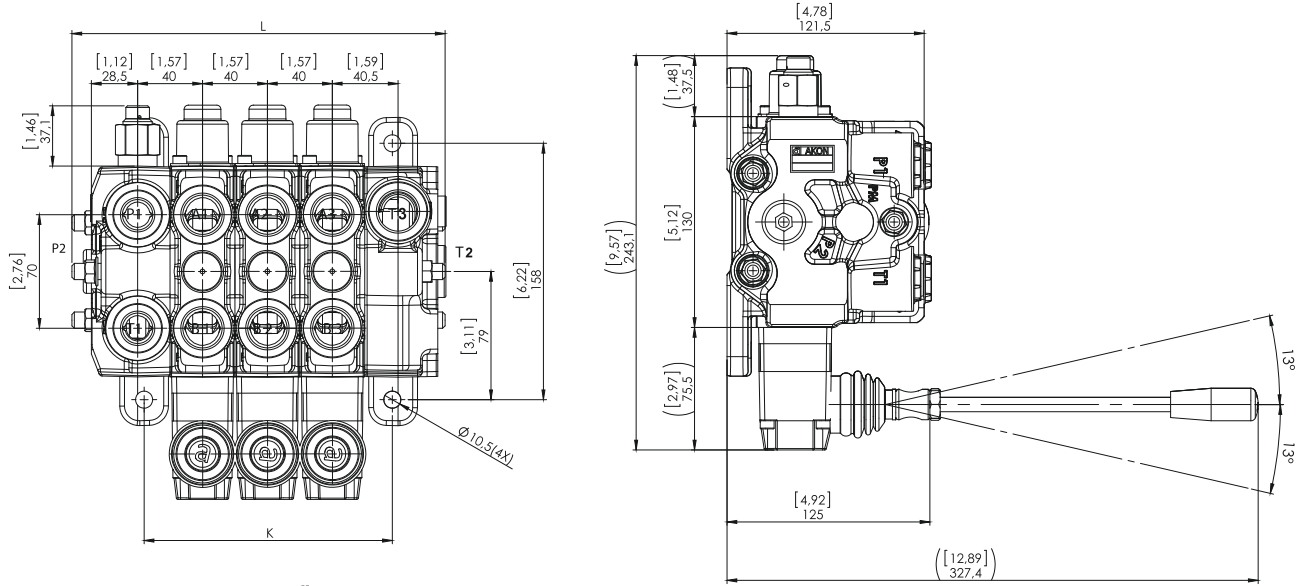
Ölçüsel Bilgi



Standard & Optional Threads Standart ve Opsiyonel Ölçüler

| Thread Paso Tipi | Code Kod | P1 - P2 - T1 | A/B | T3 | T2(CO) |
|---------------------|-------------|----------------------|----------------------|----------------------|--------|
| BSP(Standard) | B | G 1/2" | G 1/2" | G 1/2" | G 3/4" |
| | C | G 3/4" | G 3/4" | G 3/4" | G 3/4" |
| UN-UNF | M | 7/8 – 14 (SAE 10) | 7/8 – 14 (SAE 10) | 7/8 – 14 (SAE 10) | G 3/4" |
| | N | 1 1/16 – 12 (SAE 12) | 1 1/16 – 12 (SAE 12) | 1 1/16 – 12 (SAE 12) | G 3/4" |
| METRIC | Z | M22x1,5 | M22x1,5 | M22x1,5 | G 3/4" |

BSP threads are standard threads. Its necessary to code the port thread in inlet, working and outlet section. Example coding; KV171/IL-001(180)-B01/BSC1ST1/B-H
Valflerimiz standart olarak BSP Diş üretilmektedir. Talep edilen port ölçüleri basınç kapağında, her dilimin başında ve dönüş kapağında kodlanır. Örnek Kodlama; KV171/IL-001(180)-B01/BSC1ST1/B-H



Dimensions & Weight Ölçüler ve Ağırlık

| Type / Tip | K | | L | | Weight Ağırlık | |
|------------|-----|-------|-----|-------|----------------|-------|
| | mm | inc | mm | inc | kg | lb |
| KV171 | 73 | 2.87 | 155 | 6.10 | 9.85 | 21.71 |
| KV172 | 113 | 4.45 | 195 | 7.68 | 13.85 | 30.53 |
| KV173 | 153 | 6.02 | 235 | 9.25 | 17.85 | 39.35 |
| KV174 | 193 | 7.60 | 275 | 10.83 | 21.85 | 48.17 |
| KV175 | 233 | 9.17 | 315 | 12.40 | 25.85 | 56.99 |
| KV176 | 273 | 10.75 | 355 | 13.98 | 29.85 | 65.80 |
| KV177 | 313 | 12.32 | 395 | 15.55 | 33.85 | 74.62 |
| KV178 | 353 | 13.90 | 435 | 17.13 | 37.85 | 83.44 |
| KV179 | 393 | 15.47 | 475 | 18.70 | 41.85 | 92.26 |

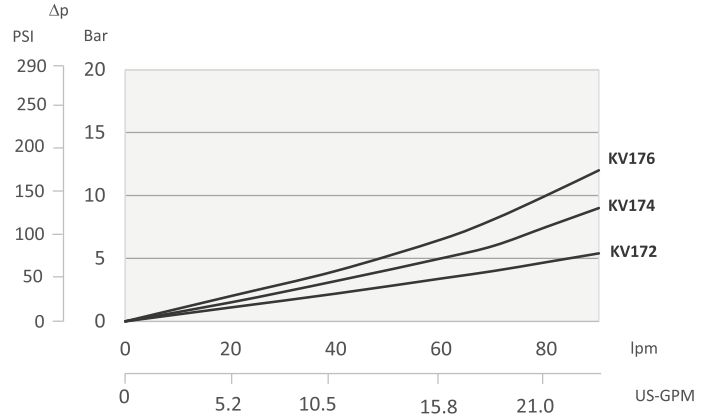
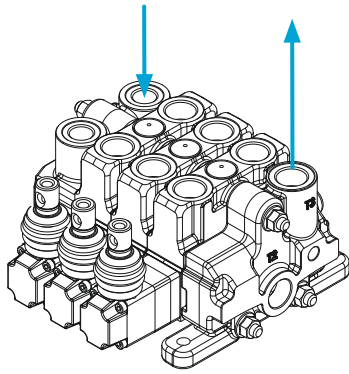
Given weights are for standard configurations.
Ağırlıklar standart konfigürasyon için verilmiştir.

Performance Data

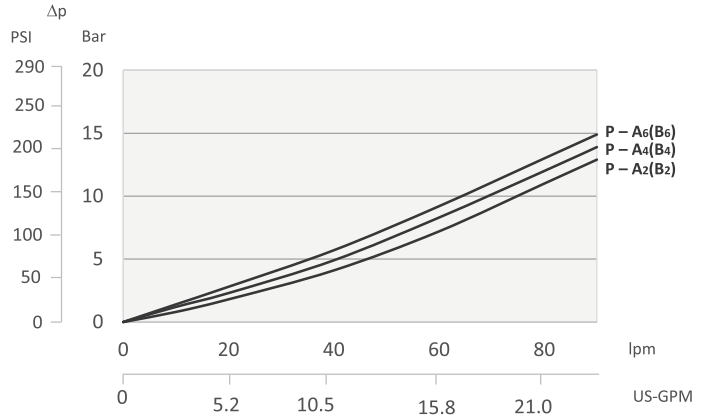
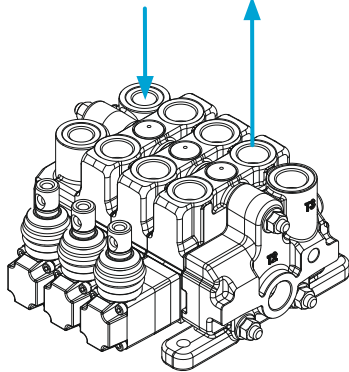
Performans Eğrileri

Pressure Drop Curves Basınç Kayıp Eğrileri

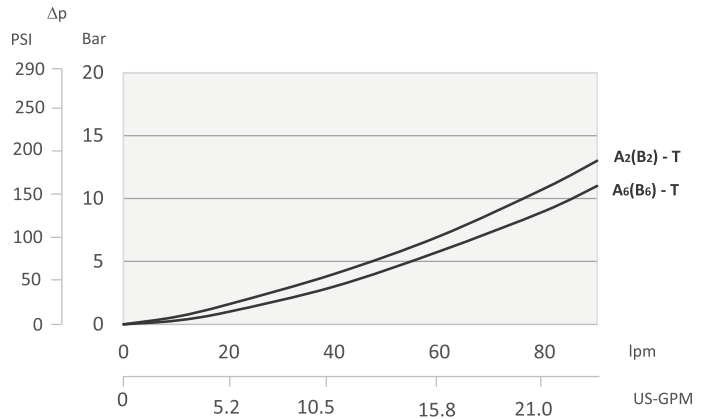
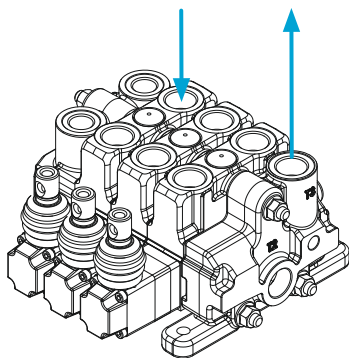
P - T



P - A/B



A/B - T



Measured with spool type ST1 and 32 cSt hydraulic oil @ 40°C.
ST1 sürgü ve 32 cSt hidrolik yağ ile 40°C'de ölçülmüştür.

Hydraulic Specifications

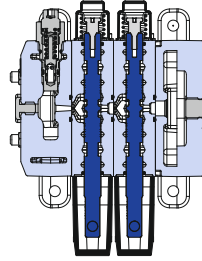
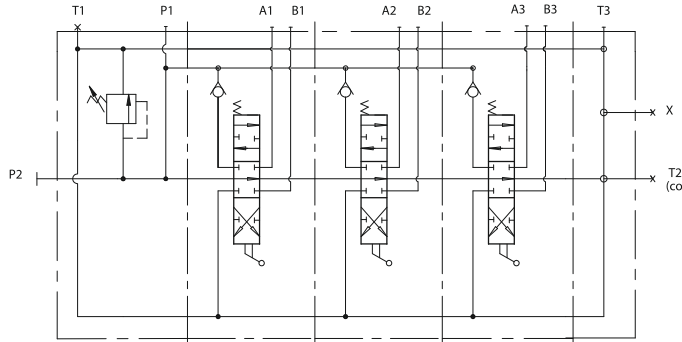
Hidrolik Devre

Parallel Circuit *Paralel Devre*

Code / Kod

**NO
CODE**

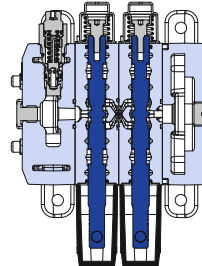
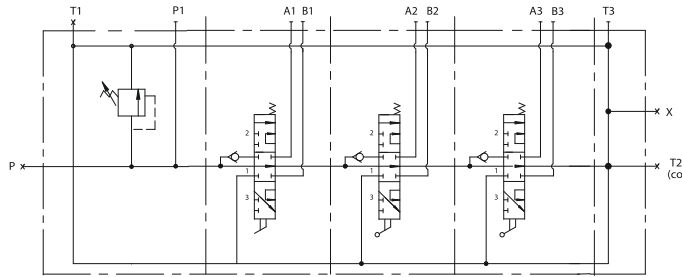
Standard configuration; Parallel circuit with upper inlet and outlet.
Standart konfigürasyon; Paralel devre, P1 ve T3 açık, P2, T1 ve T(CO) kör şeklindedir.



Series Circuit *Seri Devre*

Code / Kod

S



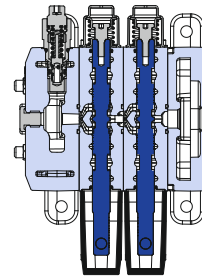
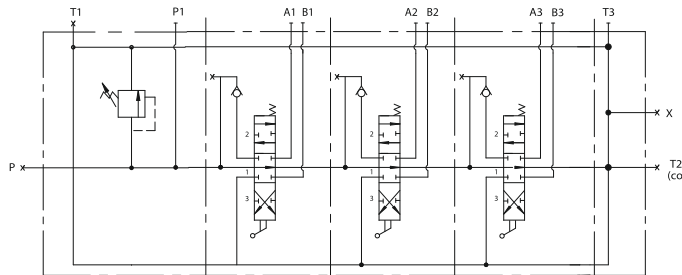
Series Circuit is coded with «S» before each series working section demanded.
Example Coding; KV172/IL-001(180)-B01/SBSC1ST1/SBSC1ST1/B
Seri devre her seri dilimin önüne «S» gelecek şekilde kodlanır.
Örnek Kodlama; KV172/IL-001(180)-B01/SBSC1ST1/SBSC1ST1/B

Maximum working pressure is 250 bar.
Maksimum çalışma basıncı 250 bar.

Tandem Circuit *Tandem Devre*

Code / Kod

T

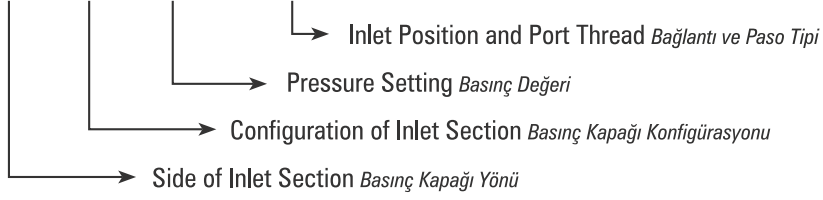


Tandem Circuit is coded with «T» before each series working section demanded.
Example Coding; KV172/IL-001(180)-B01/TBSC1ST1/TBSC1ST1/B
Seri devre her seri dilimin önüne «T» gelecek şekilde kodlanır.
Örnek Kodlama; KV172/IL-001(180)-B01/TBSC1ST1/TBSC1ST1/B

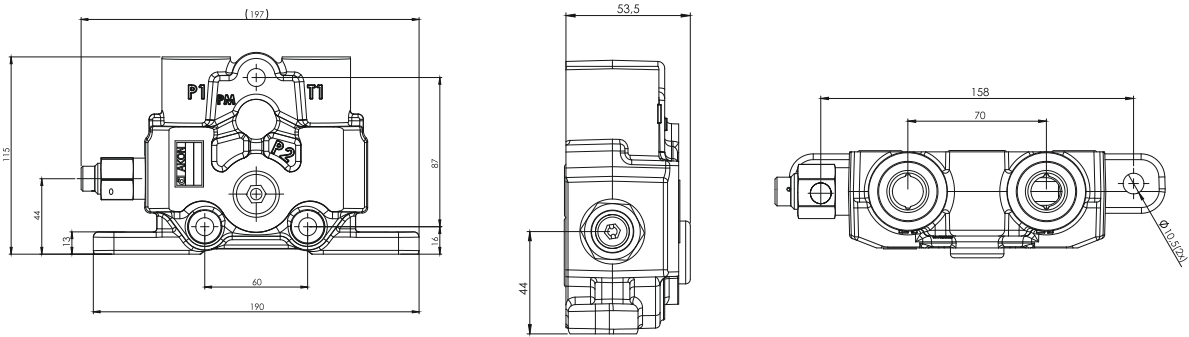
Inlet Option

Basınç (P) Hattı Opsiyonları

KV171 / **IL- 001 (180) - B01** / B SC4 ST11 V13 K3 / B



Inlet Cover *Basınç Kapağı*

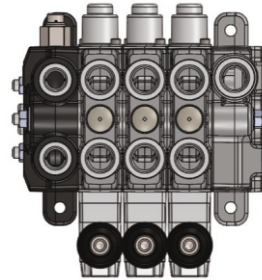
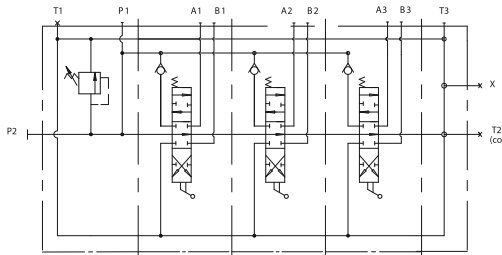


Side of Inlet Section *Basınç Kapağı Yönü*

Code / Kod

IL

Valve with left inlet *Sol Basınç Kapağı*



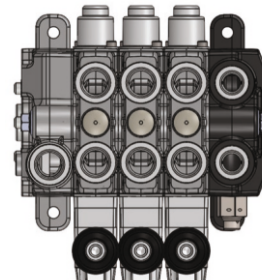
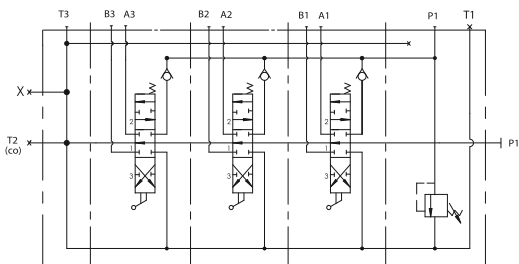
Example coding *Örnek kodlama*
KV171 / IL- 001 (180) - B01

Left inlet is standard onfiguration unless otherwise indicated.
Aksi belirtilmezse KV17 serisi valfler sol basınç kapağı ile üretilir.

Valve with right inlet *Sağ Basınç Kapağı*

Code / Kod

IR



Example coding *Örnek kodlama*
KV171 / IR- 001 (180) - B01

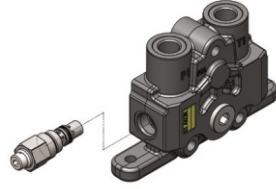
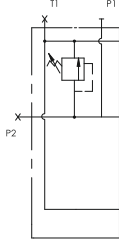
Configuration of Inlet Section

Basınç Kapağı Konfigürasyonu

001

A Side Direct Acting Main Relief Valve

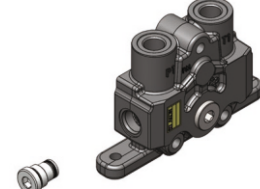
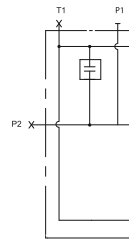
A Tarafı Regülatör



002

A Side Main Relief Valve Blanking Plug

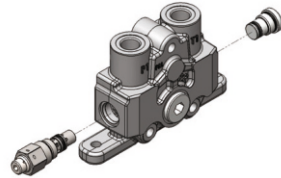
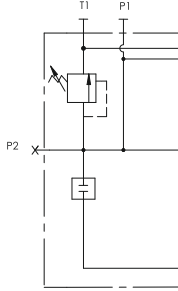
A Tarafı Kör Regülatör



003

A Side Direct Acting Main Relief Valve,
B Side Main Relief Valve Blanking Plug

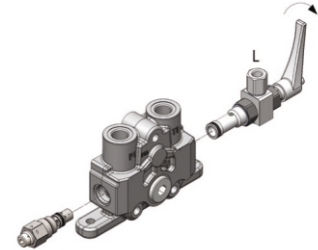
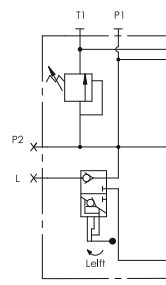
A Tarafı Regülatör, B Kör Regülatör



004

A Side Direct Acting Main Relief Valve,
B Side Hydraulic Lock or Brake Valve

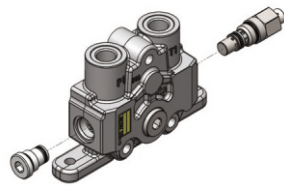
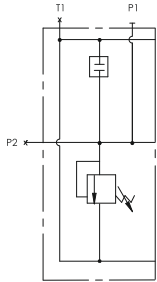
A Tarafı Regülatör, B Tarafı Kilit Valfi



005

A Side Main Relief Valve Blanking Plug,
B Side Direct Acting Main Relief Valve

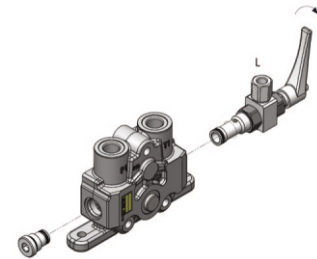
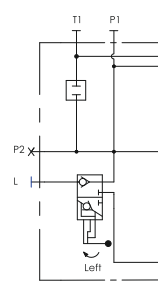
A Tarafı Kör Regülatör, B Tarafı Regülatör



006

A Side Main Relief Valve Blanking Plug,
B Side Hydraulic Lock or Brake Valve

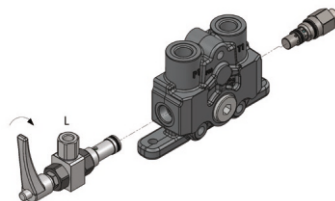
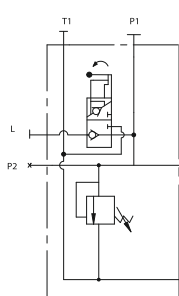
A Tarafı Kör Regülatör, B Tarafı Kilit Valfi



007

A Side Hydraulic Lock or Brake Valve
B Side Direct Acting Main Relief Valve

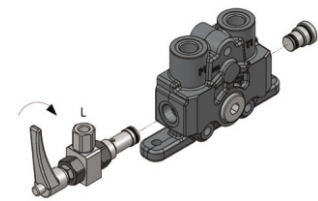
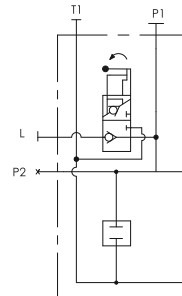
A Tarafı Kilit Valfi, B Tarafı Regülatör



008

A Side Hydraulic Lock or Brake Valve
B Side Main Relief Valve Blanking Plug

A Tarafı Kilit Valfi, B Tarafı Kör Regülatör

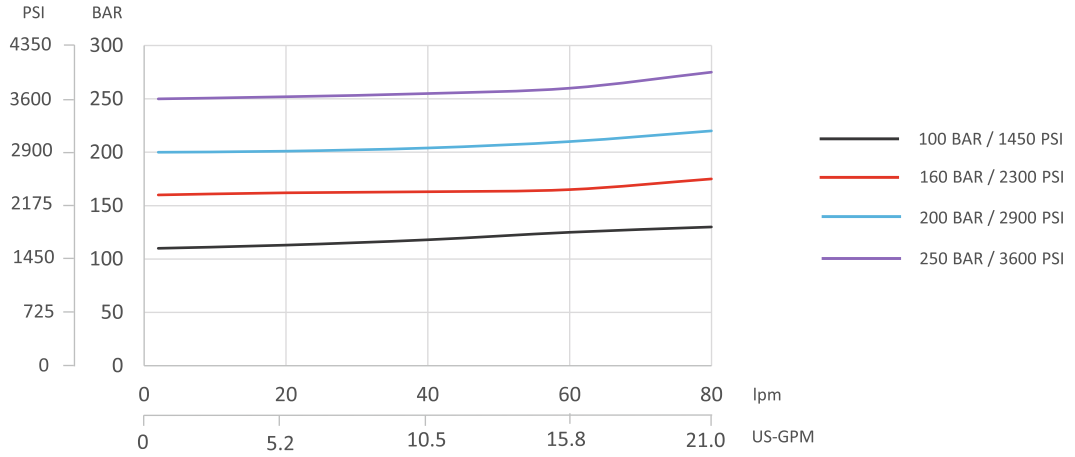


Please indicate the necessary pressure setting value. MRV is preset to 180 Bar at 15 lpm unless otherwise specified.
Lütfen ayarlanmasını istediğiniz basınç değerini bildiriniz. Ürünler standart olarak 15 lt/dk'da 180 Bara ayarlanır.

Inlet Position and Thread Type *Bağlantı ve Paso Tipi*

| Code <i>Kod</i> | Port Threads <i>Paso Tipi</i> P1, P2, T3 | Connection Port <i>Bağlantı Portu</i> | Steel Plug <i>Kör Tapa</i> | Load Sense Connection <i>Load Sense Bağlantısı</i> |
|--------------------|--|--|-------------------------------|---|
| B01 | G 1/2" | P1 | P2, T1 | - |
| B02 | G 1/2" | P1 | T1 | LS(G 1/4") |
| B03 | G 1/2" | P2 | P1, T1 | - |
| C01 | G 3/4" | P1 | P2, T1 | - |
| C02 | G 3/4" | P1 | T1 | LS(G 1/4") |
| C03 | G 3/4" | P2 | P1, T1 | - |

Main Relief Valve Performance Data *Ana Emniyet Valfi Performans Eğrisi*

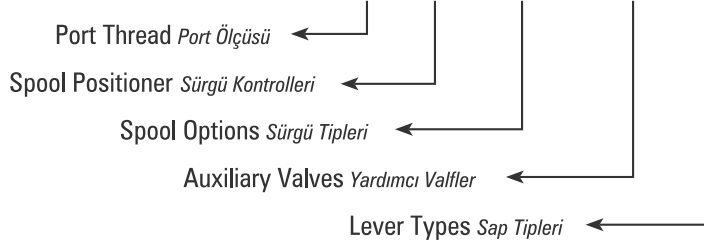


Measured with 32 cSt hydraulic oil @ 40°C and neglected tank line pressure.
32 cSt hidrolik yağ ile 40°C'de, tank hattı basıncı ihmal edilerek ölçülmüştür.

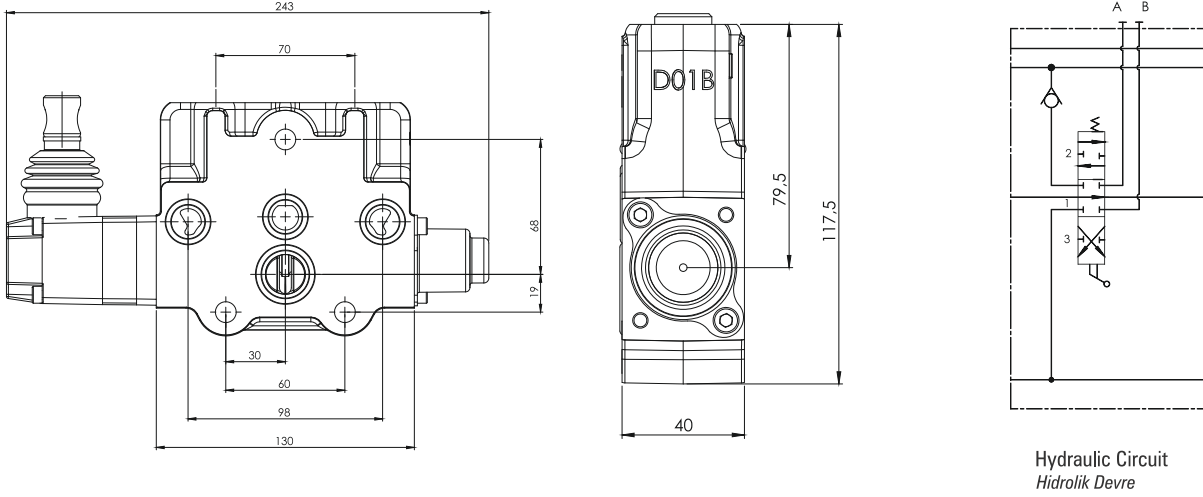
Working Section

Dilim

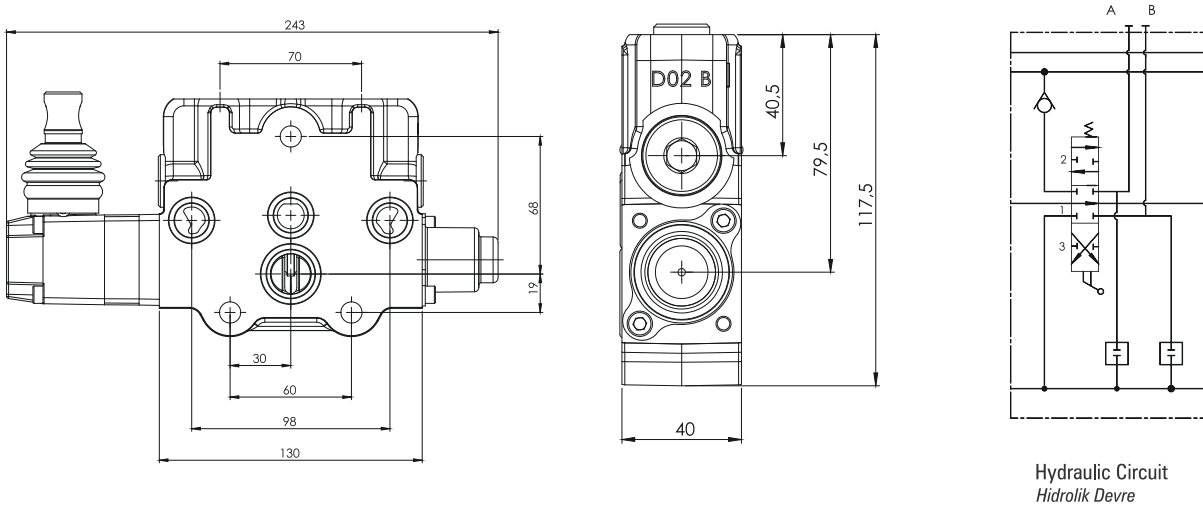
KV171 / IL- 001 (180) - B01 / **B SC4 ST11 V13 K3** / B



Working section without port relief cavity *Standart Dilim*



Working section with port relief cavity *Antişok portları işlenmiş dilim*



Spool Positioners

Sürgü Kontrolleri

KV171 / IL- 001 (180) - B01 / B **SC4** ST11 V13 K3 / B

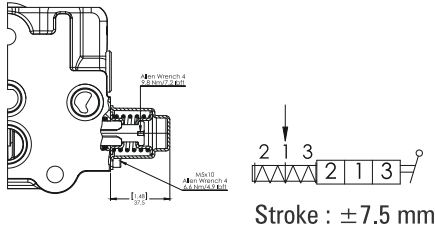
↳ Spool Positioners Sürgü Kontrolleri

Spool Positioners with Spring Return *Yay Dönüslü Sürgü Kontrolleri*

SC1

3 Positions Spring Return

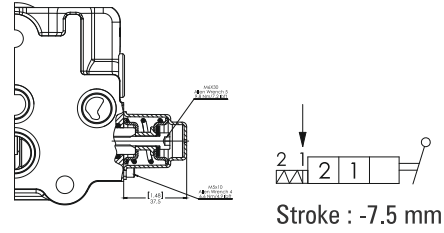
3 Pozisyon Yaylı



SC5

2 Positions Spring Return

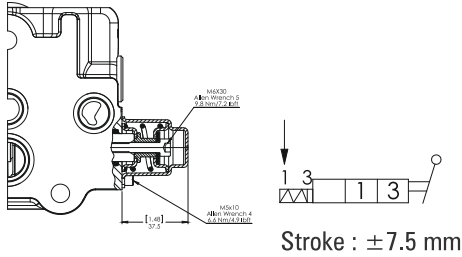
2 Pozisyon Yaylı



SC6

2 Positions Spring Return

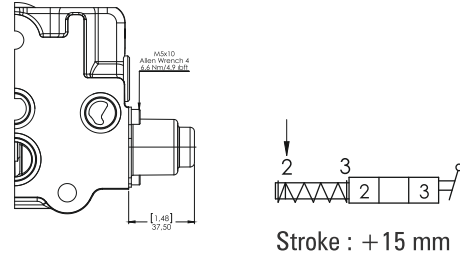
2 Pozisyon Yaylı



SC11

2 Positions Spring Return in 3rd Position

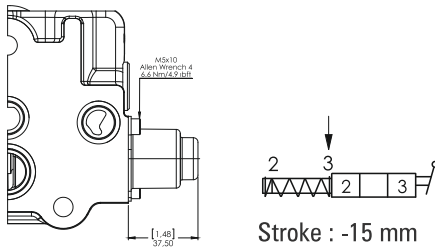
2 Pozisyon, 3. Pozisyona Yaylı



SC12

2 Positions Spring Return in 2nd Position

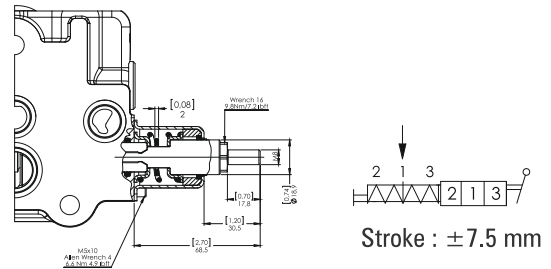
2 Pozisyon, 2. Pozisyona Yaylı



SC25

3 Position Spring Return with male M8 pin extension for dual control

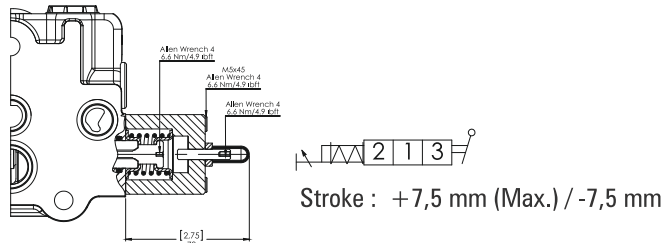
3 Pozisyon Yaylı, M8 Erkek Uzatmalı



SC33

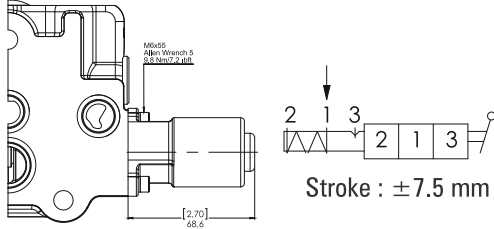
3 Position Spring Return with stroke limiter

3 Pozisyon Yaylı, Strok Limitleyici

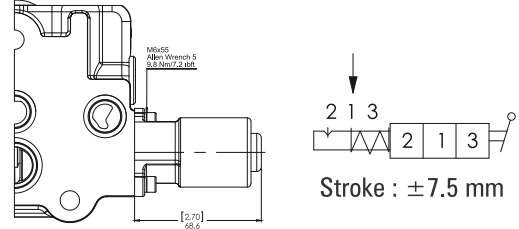


Spool Positioners with Detent *Detantlı Sürgü Kontrolleri*

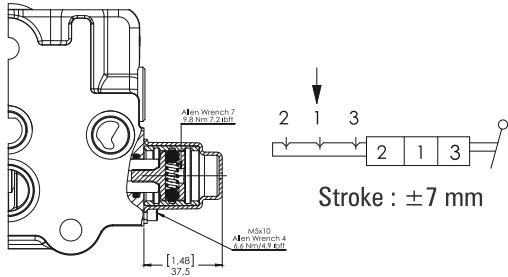
SC2 3 Position Spring Return, Detent in Pos. 3
3 Pozisyon Yaylı, 3.Pozisyon Detantlı



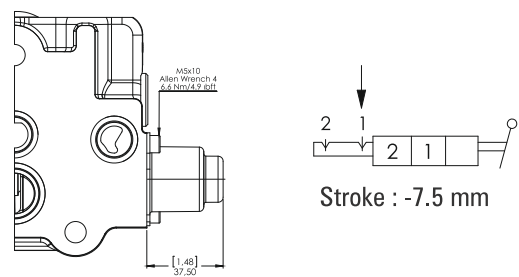
SC3 3 Position Spring Return, Detent in Pos. 2
3 Pozisyon Yaylı, 2.Pozisyon Detantlı



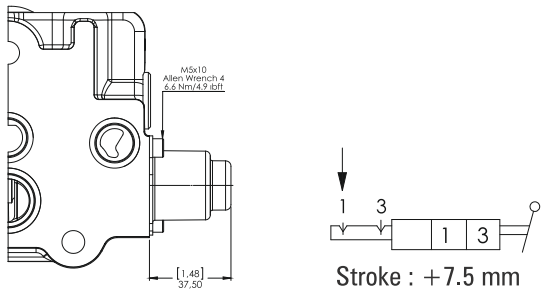
SC4 3 Position Detent in All Positions
3 Pozisyon Detantlı



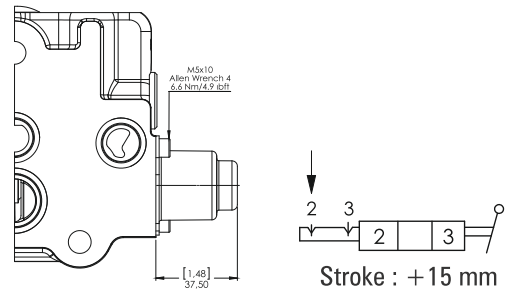
SC7 2 Position Detent
2 Pozisyon Detantlı



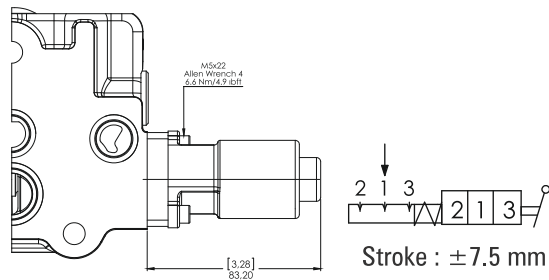
SC8 2 Position Detent
2 Pozisyon Detantlı



SC13 2 Position Detent
2 Pozisyon Detantlı



SC28 3 Position Spring Centered with Detent
3 Pozisyon Yaylı ve Detantlı

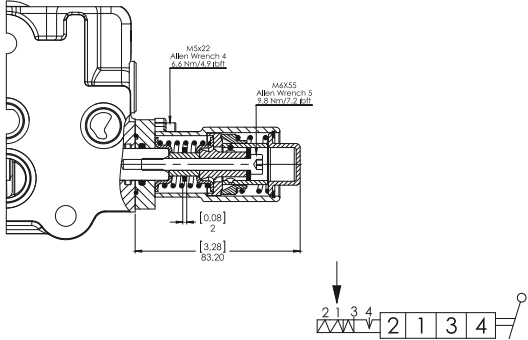


4 Position a Side Spool Positioners 4 Pozisyon A Tarafı Sürgü Kontrolleri

SC9

4 Position Spring Return, Detent in 4th Pos.

4 Pozisyon Yaylı, 4.Pozisyon Detantlı



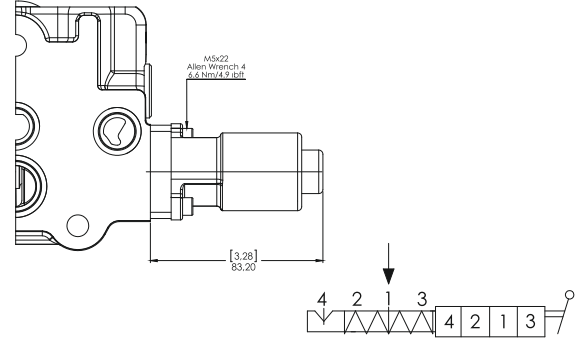
Used with Spool ST9B
ST9B Sürgü ile kullanılır

Stroke : ± 6 mm / +4.5 mm

SC23

4 Position Spring Return, Detent in 4th Pos.

4 Pozisyon Yaylı, 4.Pozisyon Detantlı



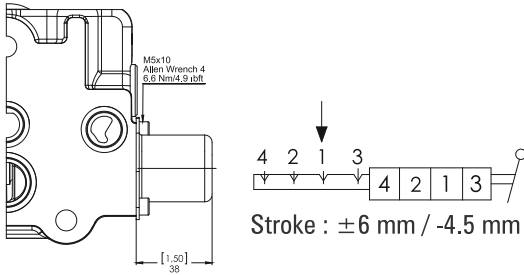
Used with Spool ST9A
ST9A Sürgü ile kullanılır

Stroke : ± 6 mm / -4.5 mm

SC10

4 Position Detent in All Positions

4 Pozisyon Tüm Pozisyonlar Detantlı



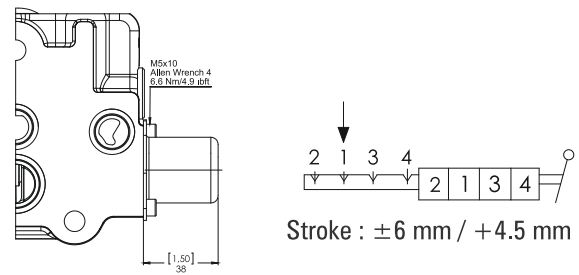
Used with Spool ST9A
ST9A Sürgü ile kullanılır

Stroke : ± 6 mm / -4.5 mm

SC24

4 Position Detent in All Positions

4 Pozisyon Tüm Pozisyonlar Detantlı



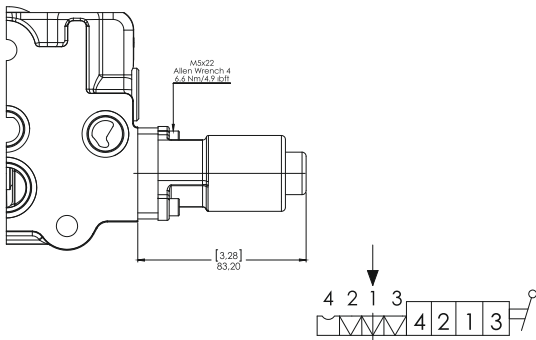
Used with Spool ST9B
ST9B Sürgü ile kullanılır

Stroke : ± 6 mm / +4.5 mm

SC21

4 Position Spring Return, Feel Detent in 4th Pos.

4 Pozisyon Yaylı, 4.Pozisyon Hissetmeli Detantlı



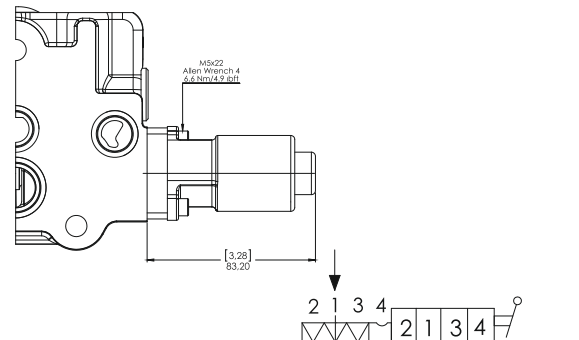
Used with Spool ST10A
ST10A Sürgü ile kullanılır

Stroke : ± 6 mm / -3.5 mm

SC22

4 Position Spring Return, Feel Detent in 4th Pos.

4 Pozisyon Yaylı, 4.Pozisyon Hissetmeli Detantlı



Used with Spool ST10B
ST10B Sürgü ile kullanılır

Stroke : ± 6 mm / +3.5 mm

SC15

On-Off Pneumatic Control

On-Off Pnömatik Kontrol

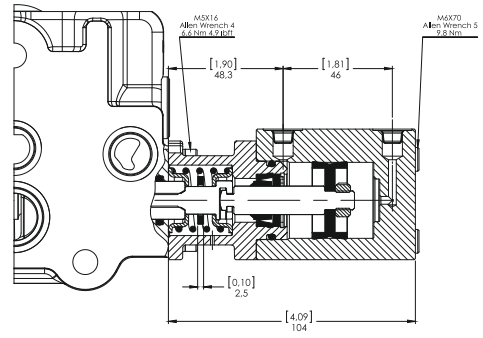
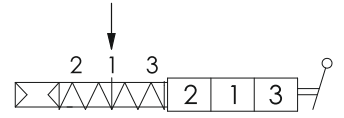
Pilot Pressure
Pilot Basıncı

Min. 6 Bar / 85 PSI

Max. 12 Bar / 170 PSI

Stroke (mm)
Strok (mm)

± 7.5 mm



SC30

On-Off Electro-Pneumatic Control

On-Off Elektro-Pnömatik Kontrol

Operation Characteristics *Çalışma Özellikleri*

Pilot Pressure
Pilot Basıncı

Min. 6 Bar / 85 PSI

Max. 12 Bar / 170 PSI

Coil Characteristics *Bobin Özellikleri*

Coil Connection Type
Bobin Bağlantı Tipi

DIN 43650

Supply Voltage
Voltaj

12VDC, 24VDC

Protection Type
Koruma

IP65

Nominal Voltage Tolerance
Nominal Voltaj Toleransı

± 10%

Duty cycle
Görev Çevrimi

100%

Absorbed Power
Güç

DC 8W

Coil Insulation Class
Yalıtım Sınıfı

Class "H" coil as from
the IEC 85 standard.
Class "H" wire (200° C).

Maximum Temperatures
Maksimum Çalışma Sıcaklığı

Class "F" 155°C
Class "H" 180°C

Stroke (mm)
Strok (mm)

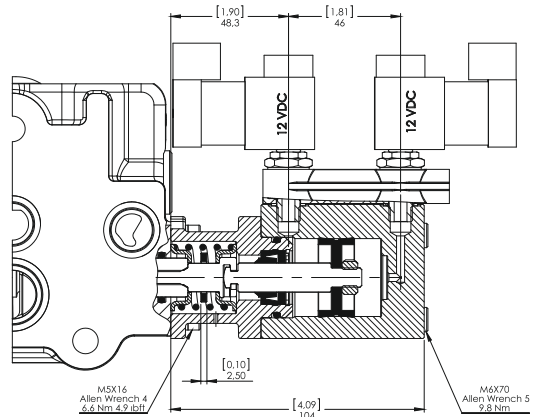
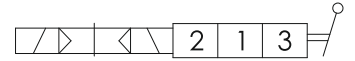
± 7,5 mm

Kit Order Code
Kit Sipariş Kodu

12VDC - 2005712000

24VDC - 2005448000

| Voltage | Code / Kod |
|---------|------------|
| 12VDC | SC302 |
| 24VDC | SC304 |



SC16

On-Off Hydraulic Control

On-Off Hidrolik Kontrol

Operation Characteristics *Çalışma Özellikleri*

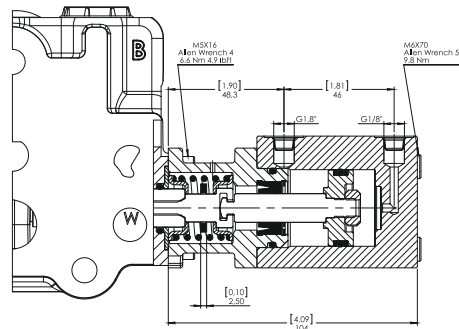
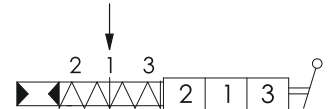
Pilot Pressure
Pilot Basıncı

Min. 6 Bar / 85 PSI

Max. 50 Bar / 720 PSI

Stroke (mm)
Strok (mm)

± 7.5 mm



SC17

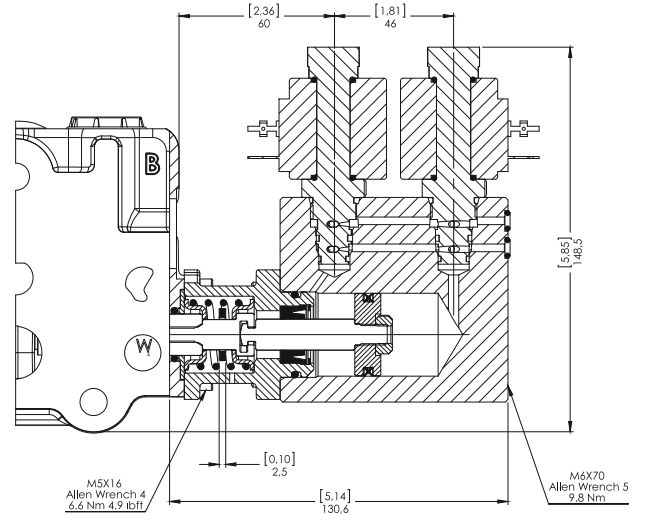
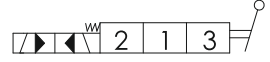
On-Off Electro-Hydraulic Control

On-Off Elektro-Hidrolik Kontrol

| Voltage | Code / Kod |
|---------|--------------|
| 12VDC | SC172 |
| 24VDC | SC174 |

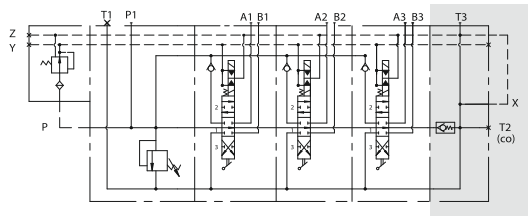
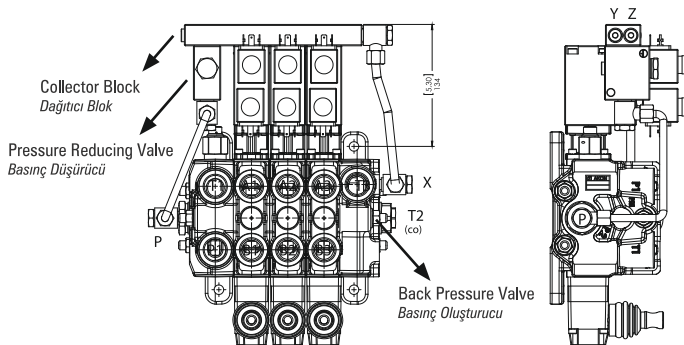
| Operation Characteristics Çalışma Özellikleri | |
|--|--|
| Pilot Pressure Pilot Basıncı | Min. 10 Bar / 145 PSI Max. 25 Bar / 360 PSI |
| Back Pressure Tank Basıncı | Max. 3 Bar |
| Coil Characteristics Bobin Özellikleri | |
| Coil Connection Type Bobin Bağlantı Tipi | DIN 43650 |
| Supply Voltage Voltaaj | 12VDC, 24VDC |
| Protection Type Koruma | IP65 |
| Nominal Voltage Tolerance Nominal Voltaaj Toleransı | ± 10% |
| Duty cycle Görev Çevrimi | 100% |
| Absorbed Power Güç | 18W |
| Coil Insulation Class Yalıtım Sınıfı | Class "F" 155°C |
| Maximum Temperatures Maksimum Çalışma Sıcaklığı | 100°C |

| | |
|---------------------------|----------|
| Stroke (mm) Strok (mm) | ± 7.5 mm |
|---------------------------|----------|



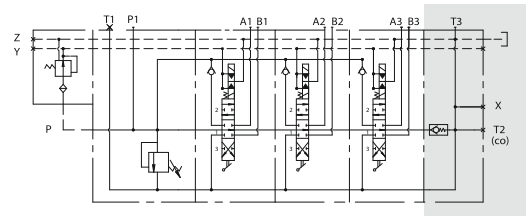
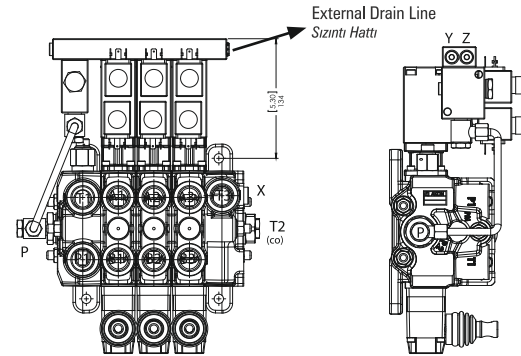
Standard Connection and Hydraulic Circuit Standart Bağlantı ve Hidrolik Devre

Electro-hydraulic kit includes the collector block, pressure reducing valve, back pressure valve and the pipes.
Elektro-hidrolik kiti, dağıtıcı blok, basınç düşürücü, basınç oluşturu ve borulardan oluşur.



Alternative Connection and Hydraulic Circuit Alternatif Bağlantı ve Hidrolik Devre

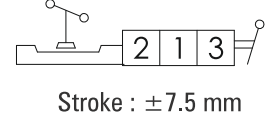
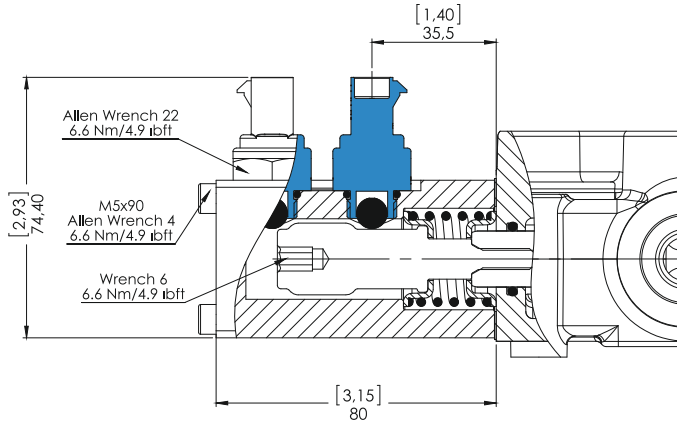
Attention!
If tank pressure is more than 3 bar, an external drain line is recommended.
Dikkat!
Sistemde tank basıncı 3 barı geçmesi durumunda sızıntı hattının bağımsız olarak direkt tanka bağlanması önerilir.



SC18

3 Positions, Microswitch Operation in both positions (NC)

3 Pozisyon, Çift Taraflı Mikrosviç Kontrol (NK)

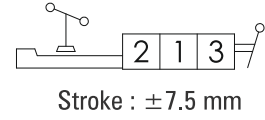
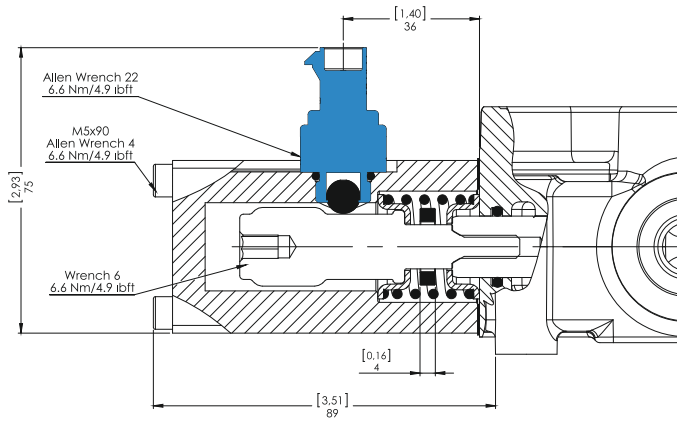


Configuration with normally open (NO) circuit is available, please contact our sales department.
Normalde Açık (NA) konfigürasyon için lütfen satış departmanımızla bağlantıya geçiniz.

SC18A

3 Positions, Microswitch Operation in 3rd Position

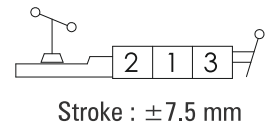
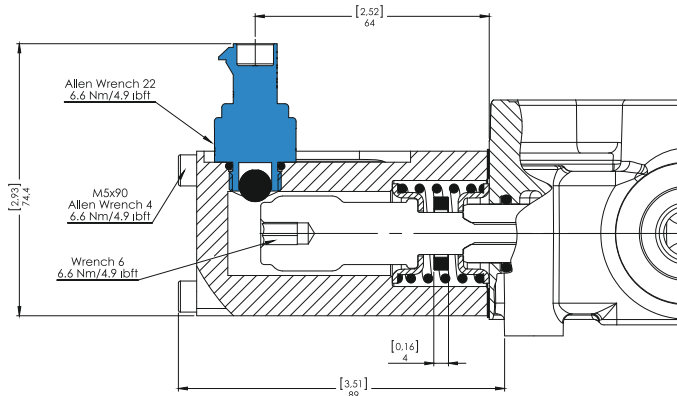
3 Pozisyon, 3.Pozisyona Mikrosviç Kontrol



SC18B

3 Positions, Microswitch Operation in 2nd Position

3 Pozisyon, 2.Pozisyona Mikrosviç Kontrol



Spool Options

Sürgü Tipleri

KV171 / IL- 001 (180) - B01 / B SC4 **ST11** V13 K3 / B

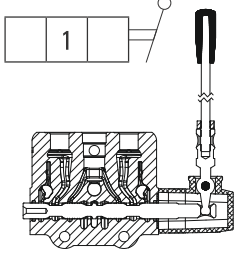
Spool Options
Sürgü Tipleri

Spool Positions Sürgü Pozisyonları

1st Position

1. Pozisyon

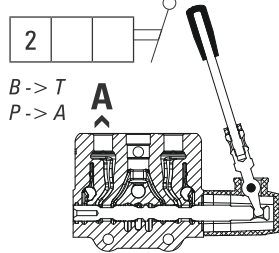
Spool Neutral Position
Nötr



2nd Position

2. Pozisyon

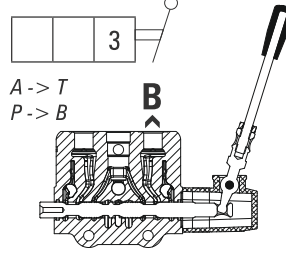
Spool In Position
Mil İçerde



3rd Position

3. Pozisyon

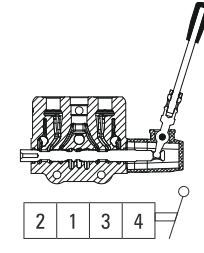
Spool Out Position
Mil Dışarda



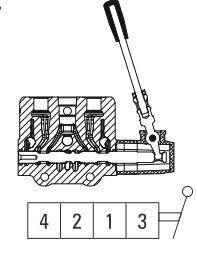
4th Position

4. Pozisyon

4th Pos. Spool Out
4. Pozisyon Mil Dışarda



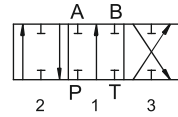
4th Pos. Spool In
4. Pozisyon Mil İçerde



ST1

3 Position, Double Acting

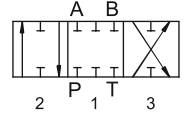
3 Pozisyon, Çift Etkili



ST4

3 Position, Closed Center

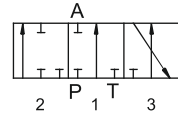
3 Pozisyon, Kapalı Merkez



ST2

3 Position, A Port Single Acting

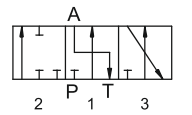
3 Pozisyon, A Port Tek Etkili



ST5

3 Position, A Port Single Acting and to Tank

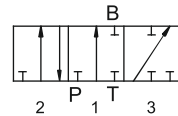
3 Pozisyon, A Port Tek Etkili ve Tanka Açık



ST3

3 Position, B Port Single Acting

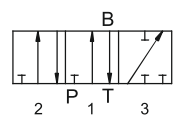
3 Pozisyon, B Port Tek Etkili



ST6

3 Position, B Port Single Acting and to Tank

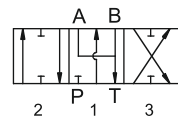
3 Pozisyon, B Port Tek Etkili ve Tanka Açık



ST11

3 Position, Double Acting, A/B to Tank

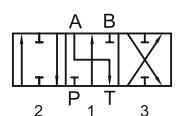
3 Pozisyon, Çift Etkili A ve B Tanka Açık



ST7

3 Position, Double Acting A to Tank

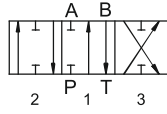
3 Pozisyon, Çift Etkili ve A Tanka Açık



ST8

3 Position,
Double Acting B to Tank

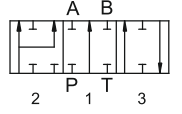
3 Pozisyon,
Çift Etkili ve B Tanka Açık



S12A

3 Position, Double Acting With
Regenerative in 3rd Position
(2nd Position Spool In)

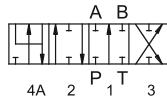
3 Pozisyon, Çift Etkili
3. Pozisyonda Rejeneratif
(Mil İçerde 2. Pozisyon)



ST9A

4 Position, Double Acting with
Float in 4th Position
(4th Position Spool In)

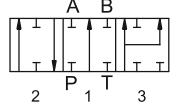
4 Pozisyon, 4. Pozisyonda Float
(Mil İçerde 4. Pozisyon)



ST12B

3 Position, Double Acting With
Regenerative in 2nd Position
(3rd Position Spool Out)

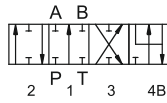
3 Pozisyon, Çift Etkili
2. Pozisyonda Rejeneratif
(Mil Dışarda 3. Pozisyon)



ST9B

4 Position, Double Acting with
Float in 4th Position
(4th Position Spool Out)

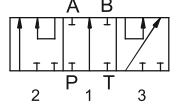
4 Pozisyon, 4. Pozisyonda Float
(Mil Dışarda 4. Pozisyon)



ST19

3 Position, Series Spool

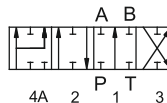
3 Pozisyon, Seri Sürgü



ST10A

4 Position, Double Acting with
Regenerative in 4th Position
(4th Position Spool In)

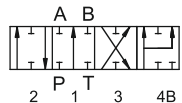
4 Pozisyon,
4. Pozisyonda Rejeneratif
(Mil İçerde 4. Pozisyon)



ST10B

4 Position, Double Acting With
Regenerative in 4th Position
(4th Position Spool Out)

4 Pozisyon,
4. Pozisyonda Rejeneratif
(Mil Dışarda 4. Pozisyon)



Auxiliary Valves

Yardımcı Valfler

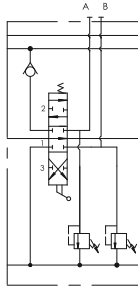
KV171 / IL- 001 (180) - B01 / B SC4 ST11 **V13** K3 / B

Auxiliary Valves
Yardımcı Valfler

V1

Antishock valves on A & B ports

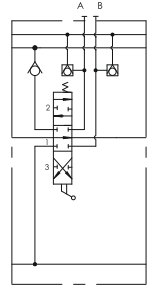
A & B portlarında antişok valfi



V4

Anticavitation valves on A & B ports

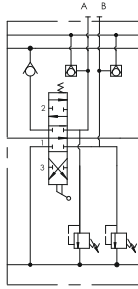
A & B portlarında antikavitasyon valfi



V7

Antishock & anticavitation valves on A & B ports

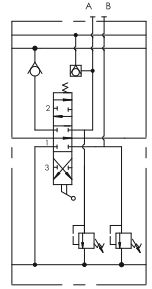
A & B portlarında antişok & antikavitasyon valfi



V8

Antishock & anticavitation valve on port A & antishock valve on port B

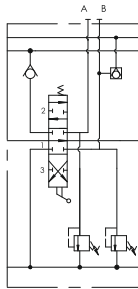
A portunda antişok & antikavitasyon valfi & B portunda antişok valfi



V9

Antishock valve on port A & antishock & anticavitation valve on port B

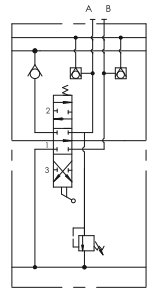
A portunda antişok valfi & B portunda antişok & antikavitasyon valfi



V12

Antishock & anticavitation valve on port A & anticavitation valve on port B

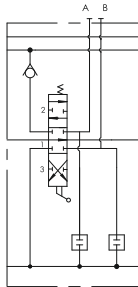
A portunda antişok & antikavitasyon valfi & B portunda antikavitasyon valfi



V13

Port relief cavity plug on A & B ports

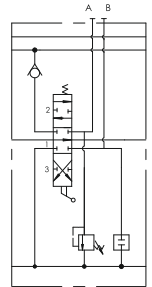
A & B portlarında kör tapa



V17

Antishock valve on port A & port relief cavity plug on port B

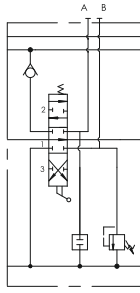
A portunda antişok & B portunda kör tapa



V18

Port relief cavity plug on port A
& antishock valve on port B

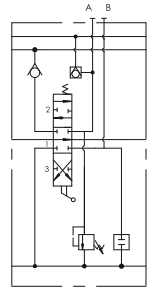
A portunda kör tapa
& B portunda antişok valfi



V19

Antishock & anticavitation valve
on port A & port relief cavity plug
on port B

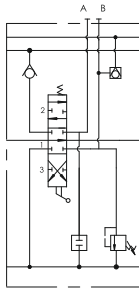
A portunda antişok
& antikavitezyon valfi
& B portunda kör tapa



V20

Port relief cavity plug on port A
& antishock & anticavitation valve
on port B

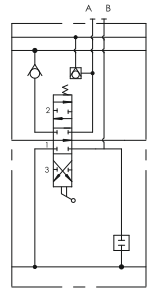
A portunda kör tapa
& B portunda antişok
& antikavitezyon valfi



V21

Anticavitation valve on port A
& port relief cavity plug on port B

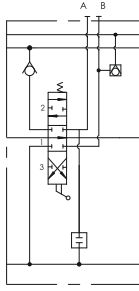
A portunda antikavitezyon valfi
& B portunda kör tapa



V22

Port relief cavity plug on port A
& anticavitation valve on port B

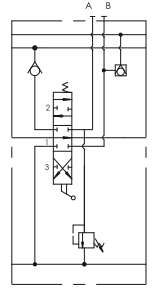
A portunda kör tapa
& B portunda antikavitezyon valfi



V27

Antishock valve on port A
& anticavitation valve on port B

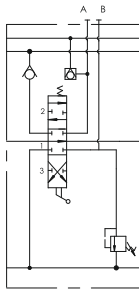
A portunda antişok
& B portunda antikavitezyon valfi



V28

Anticavitation valve on port A
& antishock valve on port B

A portunda antikavitezyon valfi
& B portunda antişok valfi



Lever Types

Sap Tipleri

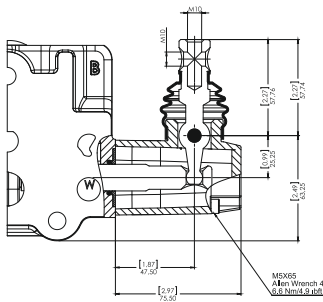
KV171 / IL- 001 (180) - B01 / B SC4 ST11 V13 **K3** / B

Lever Types
Sap Tipleri

NO
CODE

Standard Lever Kit
Standart Sap Kapağı

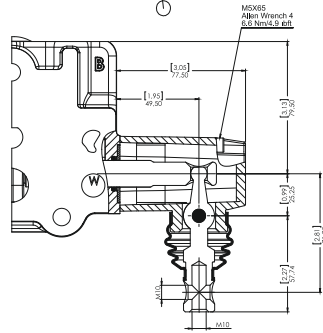
2 1 3



K1

Reverse Lever Kit
Ters montaj Sap Kapağı

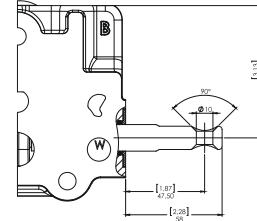
2 1 3



K2

No Lever
Sap Kapaksız

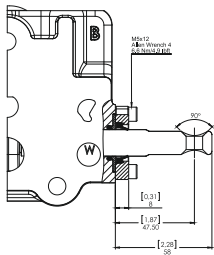
2 1 3



K3

Dust Proof Plate Kit
Toz Kapaklı

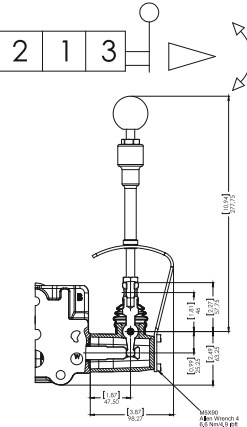
2 1 3



K4

Safety Lever
Güvenlik Kolu

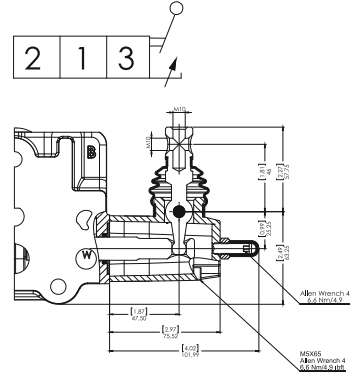
2 1 3



K5

Lever Cap with Spool Limiter
Sürgü Strok Kısıtlayıcı

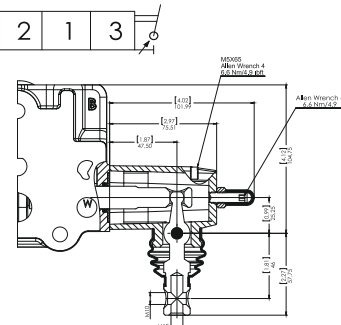
2 1 3



K6

Rev. Lever Cap with Spool Limiter
Ters Montaj Sürgü Strok Kısıtlayıcı

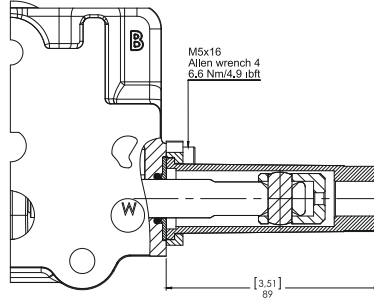
2 1 3



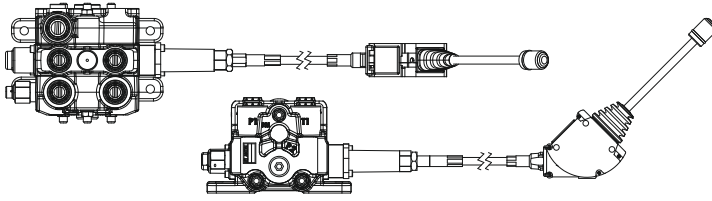
KT**Cable Connection Kit**

Kablo Bağlantı Kiti

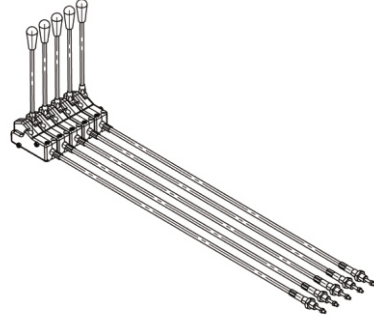
2 1 3



Lever Cable Remote Control *Halat Kontrol*



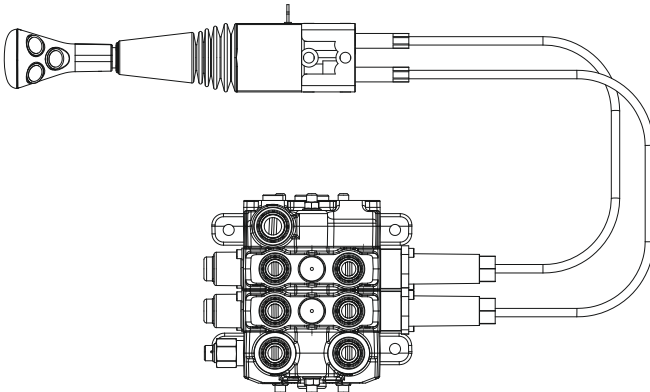
Cable remote control for Group of Levers *Halat Kontrol Grubu*



Lever cable remote control and cable remote control for group of levers are a modular system offering unlimited number of levers together through screws, also with many different configurations and cable lengths. Assembled on the valve only on request and extra charge. Please contact our sales department for details.

Halat kontrol ve halat kontrol grubu için farklı uzunlukları mevcuttur. Halat Kontrol grubu ise talebe göre çeşitli dilim sayıları için ve çeşitli uzunluklarda temin edilir. Kontrol grubu birbirine saplarla bağlanmaktadır. Lütfen detaylı bilgi için satış departmanımızla bağlantıya geçiniz.

Remote Joystick Control *Joystik Halat Kontrol*



Remote joystick control is available with several options. Please indicate the cable length demanded and contact our sales department for further demands.

Joystik halat kontrol farklı çeşit ve uzunluklarda mevcuttur. Lütfen satış departmanımızla bağlantıya geçiniz.

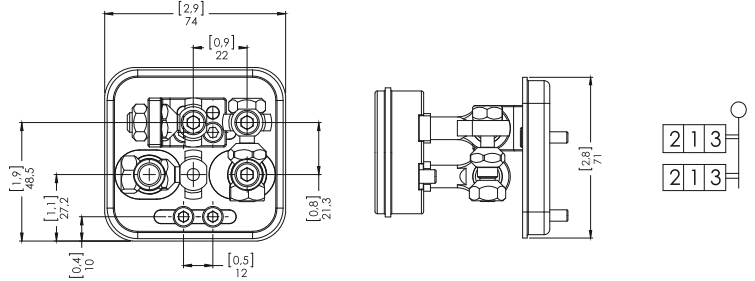
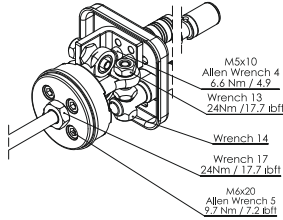
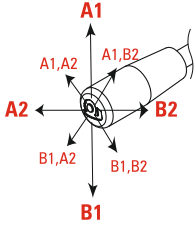
Joystick Control

Joystik Kontrol

K7

Manual Joystick with pivot on top left

Manuel Joystick Kontrol (Pivot Sol Üst)

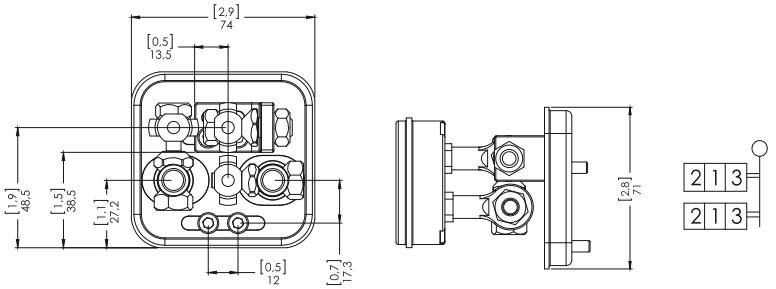
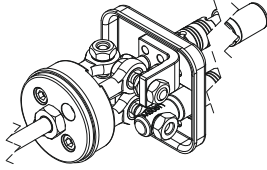
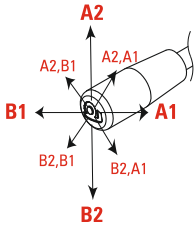


K7 is standard configuration unless otherwise specified.
Aksi belirtilmedikçe K7 standart konfigürasyondur.

K7B

Manual Joystick with pivot on top right

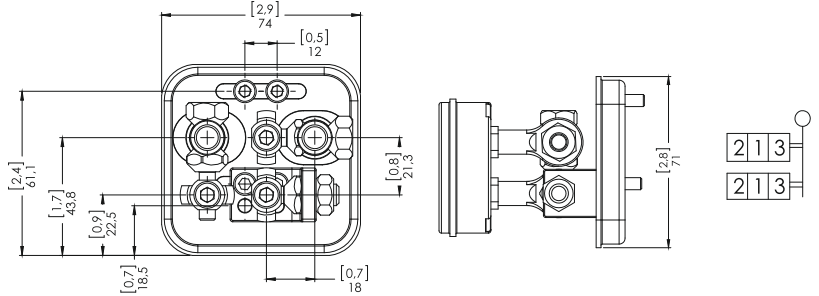
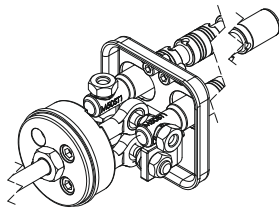
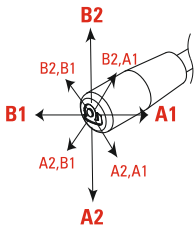
Manuel Joystick Kontrol (Pivot Sağ Üst)



K7C

Manual Joystick with pivot on bottom right

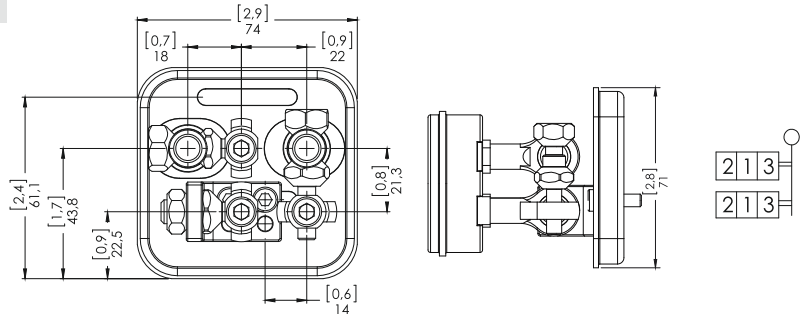
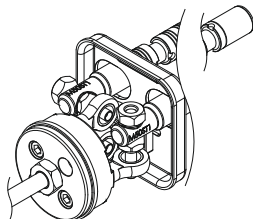
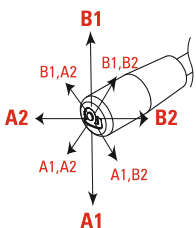
Manuel Joystick Kontrol (Pivot Sağ Alt)



K7D

Manual Joystick with pivot on bottom left

Manuel Joystick Kontrol (Pivot Sol Alt)



Outlet Options

Tank (T) Hattı Opsiyonları

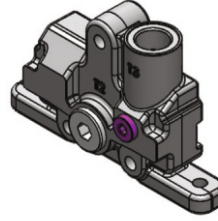
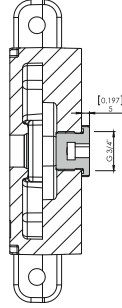
KV171 / IL- 001 (180) - B01 / B SC4 ST11 V13 K3 / **B - H**

Outlet Options
Tank (T) Hattı Opsiyonları

Standard Open Center Upper Outlet (T3 open, T1,T2 plugged)

Standart Açık Merkez (T3 açık, T1 ve T2 kör)

| Port Thread Port Ölçüsü | Code / Kod |
|-------------------------|------------|
| G 1/2" | B |
| G 3/4" | C |



Please contact our Sales Department for other outlet options.
Özel talepleriniz için lütfen Satış Departmanımızla bağlantıya geçin.

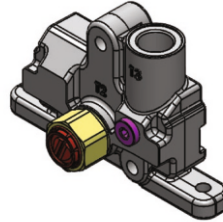
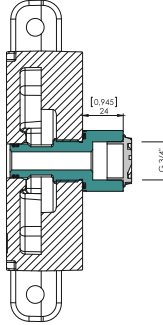
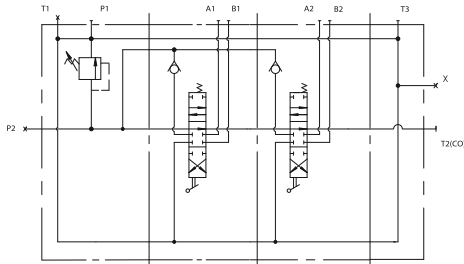
Outlet with Carry-Over

Carry-Over

When Carry-Over is used for series connection with another valve, T3 or T1 of the first valve must be connected to the tank.

Carry-over kullanıldığında, 1.valfin tank hattı (T3 veya T1) mutlaka tanka bağlanmalıdır.

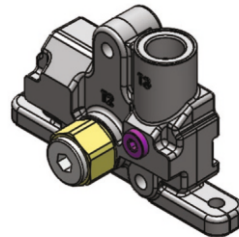
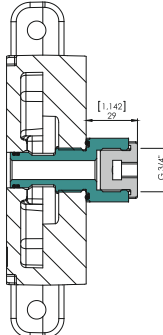
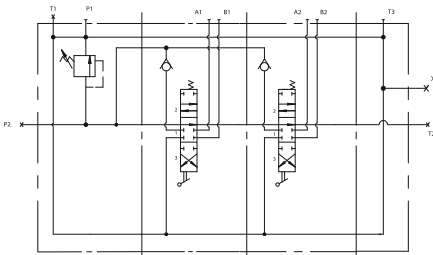
| Port Thread Port Ölçüsü | Code / Kod |
|-------------------------|------------|
| G 1/2" | B-H |
| G 3/4" | C-H |



Outlet with Closed Center Plug

Kapalı Merkez

| Port Thread Port Ölçüsü | Code / Kod |
|-------------------------|------------|
| G 1/2" | B-K |
| G 3/4" | C-K |





www.akon.com.tr

export@akon.com.tr
sales@akon.com.tr