

**MECHANICAL SPECIFICATION**

Body material : Nylon  
 Bottom rubber material : Neoprene  
 Colour : Black  
 Operating temperature range : -20°C / +60°C  
 Connecting hub : Female thread / M14x1,5

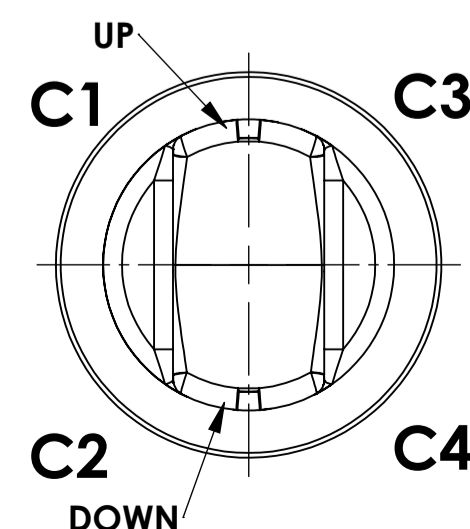
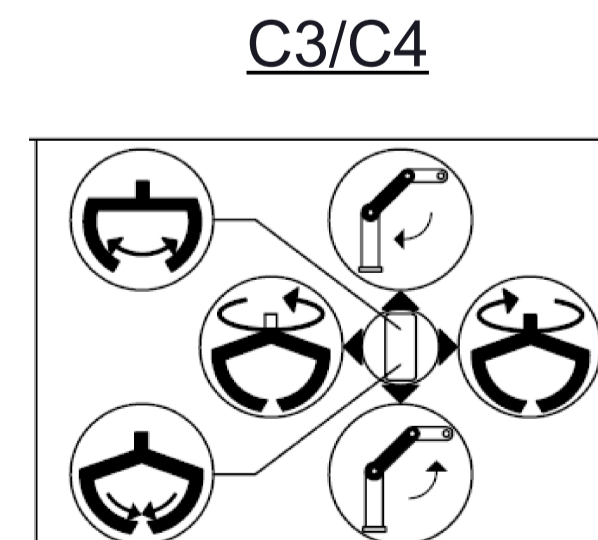
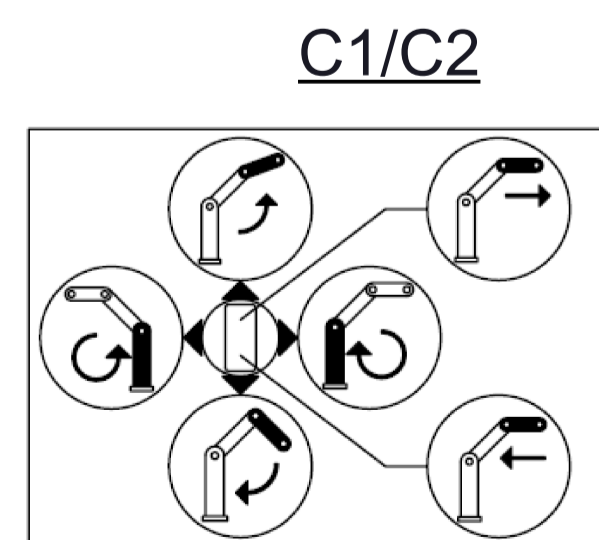
**ELECTRICAL SPECIFICATION**

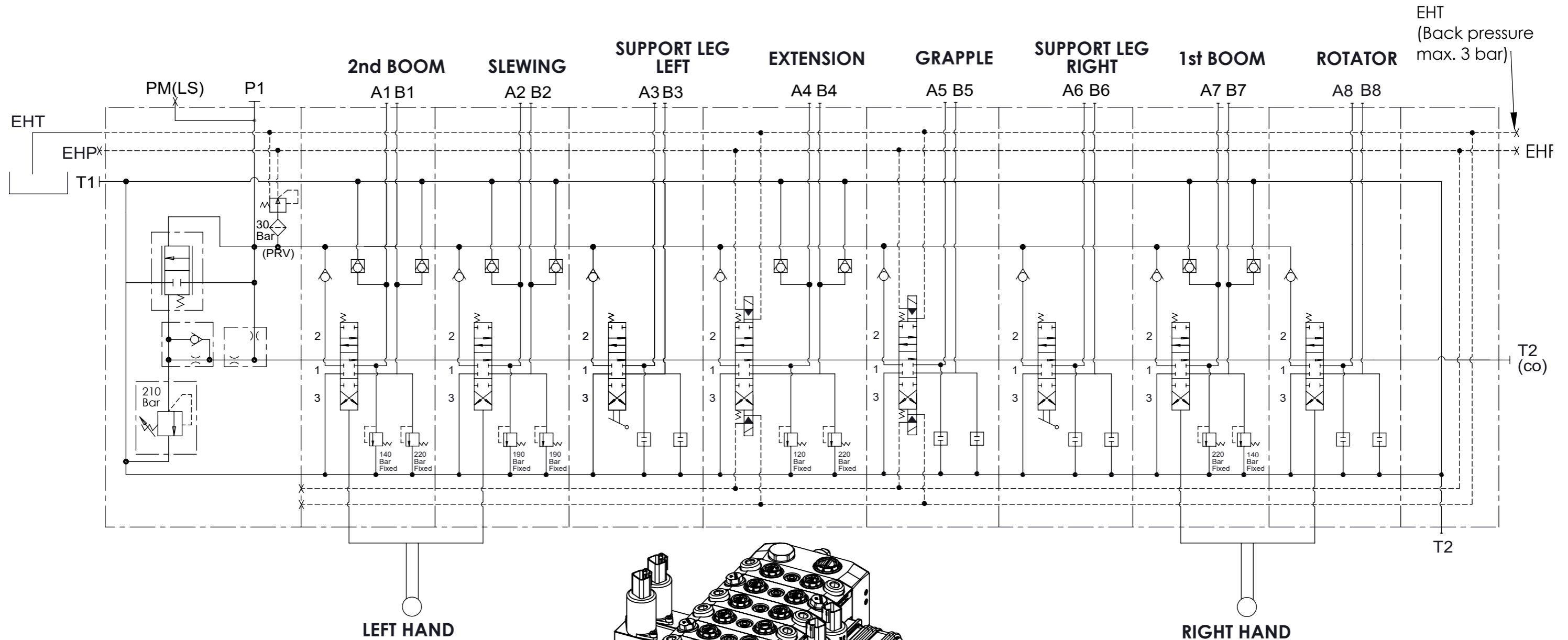
Prewires exit cable : 250mm  
 Insulating cable material : PVC

**PUSH BUTTON AND ROCKER SWITCH**

Contacts : Silver plated  
 Rated amperage : 16A / 250 vac  
 3A / 24 VDC  
 Electrical life : >100.000 cycles  
 Mechanical life : >3.000.000 cycles  
 Protection class : IP54

**VALF S58/IHFL.**





PORT SIZE:  
 A-B : G3/8"  
 P1, T1, T2, T2(co) : G1/2"  
 EHP, EHT : G1/4"

**TECHNICAL SPECIFICATIONS:**

Number of spool : 8  
 Max. Pressure : 315 Bar  
 Work Pressure : 210 Bar  
 Max. Tank Pressure : 30 Bar  
 Max. Drain Line Pressure : 3 Bar  
 (BPV) Back Pressure valve : 9 Bar  
 Inlet Flow Rate : 70 lpm

**TEST SPECIFICATIONS :**

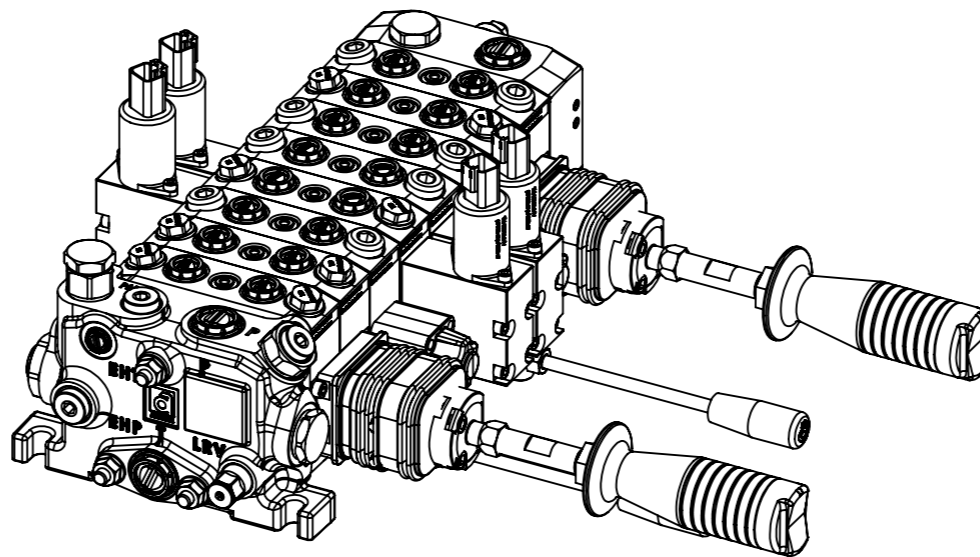
Test with Petroleum SAE32 Hydraulic Oil at 40±2°C  
 Main Relief Valve to be Set 210 Bar At 16 l/min

**Leakage Rates**

Internal leakage of max. 10cc/min. at 100 Bar 32cSt 40°C

**WORKING CONDITIONS:**

Recommended Oil Viscosity Range : 10 cSt to 75 cSt  
 Recommended Oil Filtering : β10 ≥ 75  
 Recommended Fluid Tempe.Range : -20°C to +80°C  
 Enviromental Temperature Range : -30°C to +60°C  
 Max.Contamination Level: Class 10 (NAS 1638)  
 19/16(ISO 4406)



**VALF KODLAMA**

VALF S58/IHFL-005(210)-B01  
 /ASC1(Z)ST1V7(A140B220)K7E  
 /ASC1(Z)ST1V7(A190B190)K7E  
 /ASC1ST1V13K1  
 /ASC382ST1V7(A120B220)  
 /ASC382ST1V13  
 /ASC1ST1V13K1  
 /ASC1(Z)ST1V7(A220B140)K7E  
 /ASC1(Z)ST1V13K7E  
 /B-H

