

PORT SIZE:

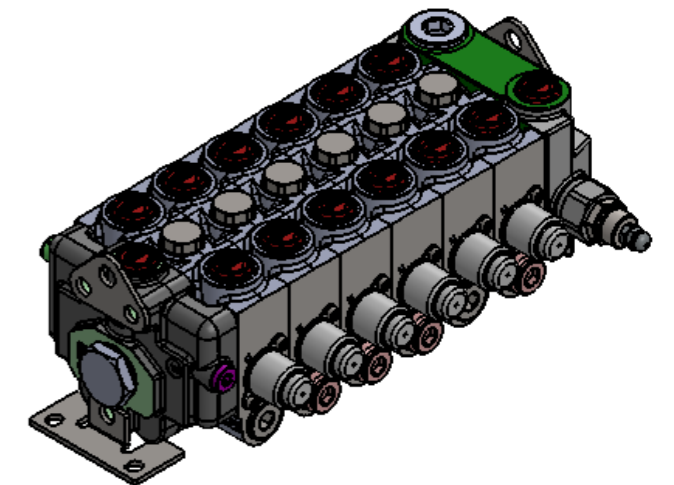
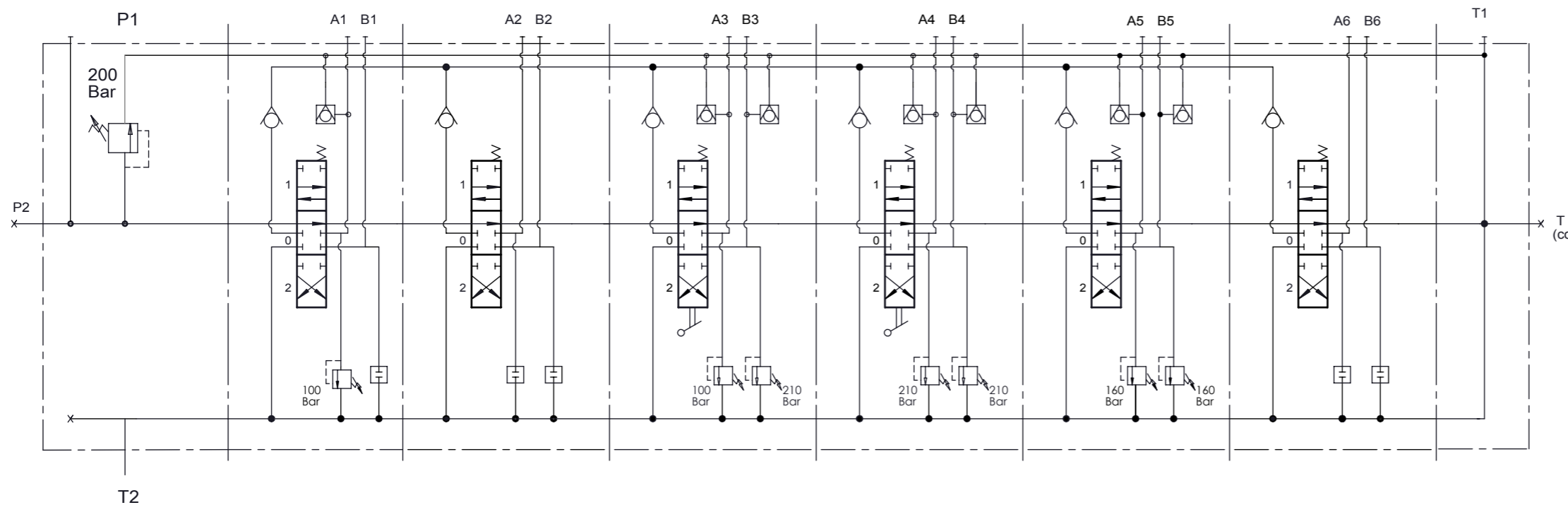
P1, P2, T3, A-B : G3/4"
 T1, T2 : G1"

TECHNICAL SPECIFICATIONS:

Number of spool : 6
 Nominal Flow : 100 lt/min
 Max. Flow : 130 lt/min
 Operating Pressure : 200 Bar
 Max. Work Pressure : 315 Bar
 Max. Back Pressure : 30 Bar

WORKING CONDITIONS:

Recommended oil viscosity range : 10 cSt to 75 cSt
 Recommended oil filtering : $\beta_{10} \geq 75$
 Recommended fluid temperature range : -20 to +80
 Environmental temperature range : -20 to +80
 Max. contamination level :
 Class10 (NAS 1638)16/19 (ISO 4406)



VALVE KV196
 /IL-005(200)-C01
 /CSC1ST1V19(A100)K3
 /CSC1ST1V13K3
 /CSC1ST1V7(A100B210)K3
 /CSC1ST1V7(A210B210)K3
 /CSC1ST1V7(A160B160)K3
 /CSC1ST1V13K3
 /C

