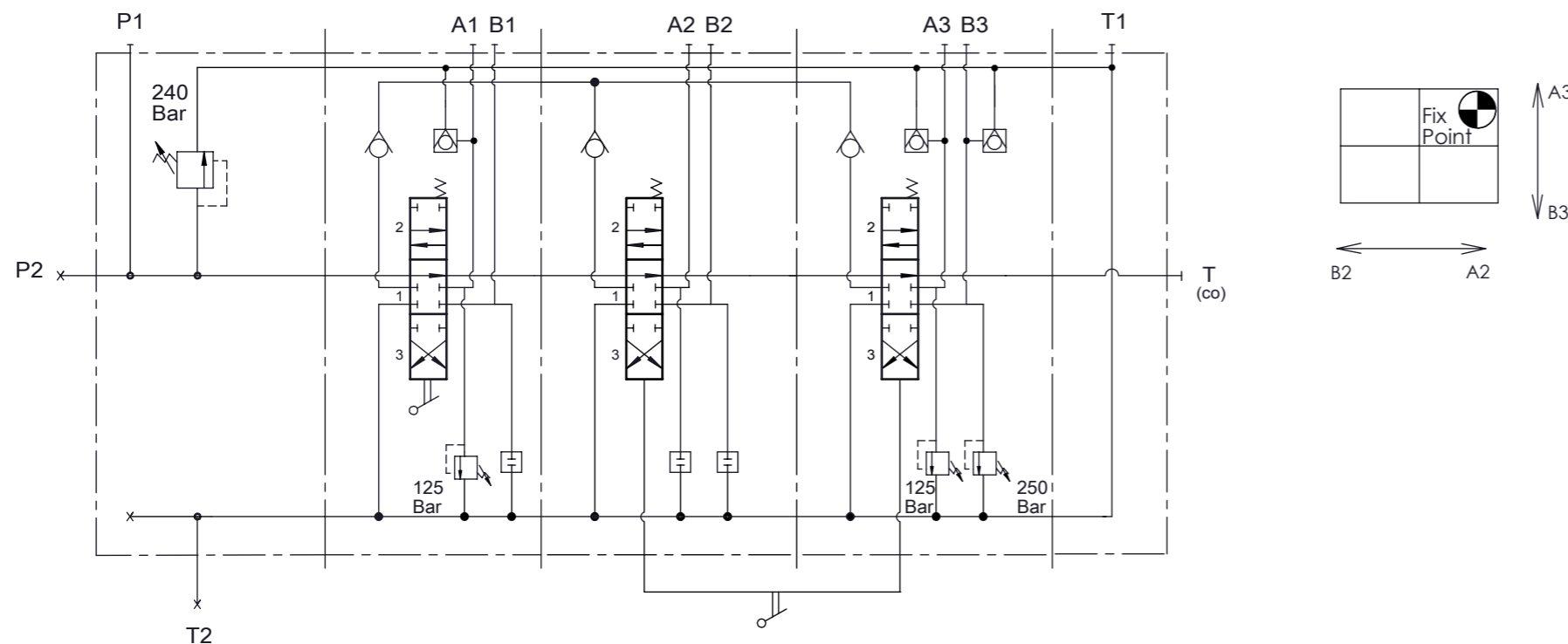


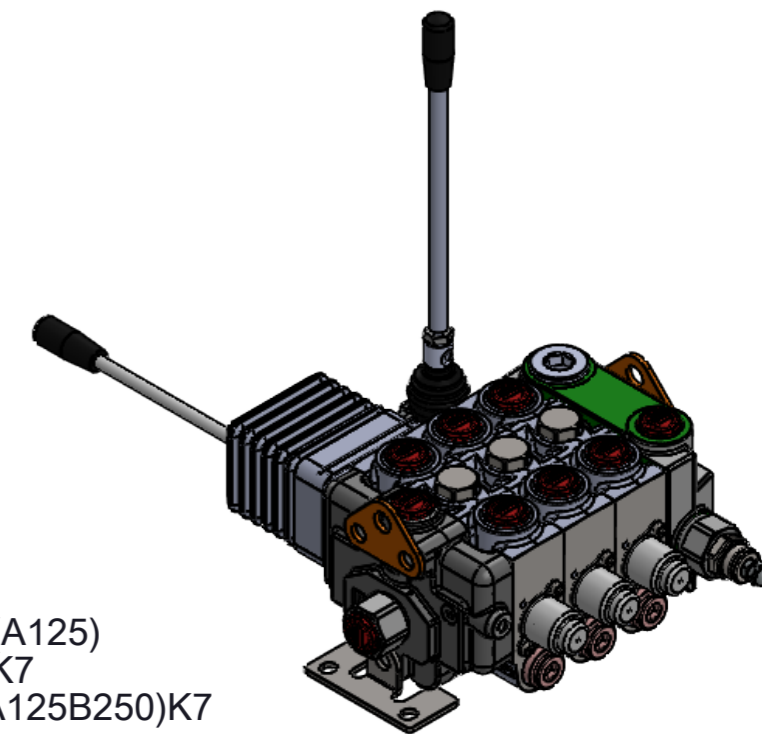
PORT SIZE:
 P1, P2, T3, A-B : G3/4"
 T1, T2 : G1"

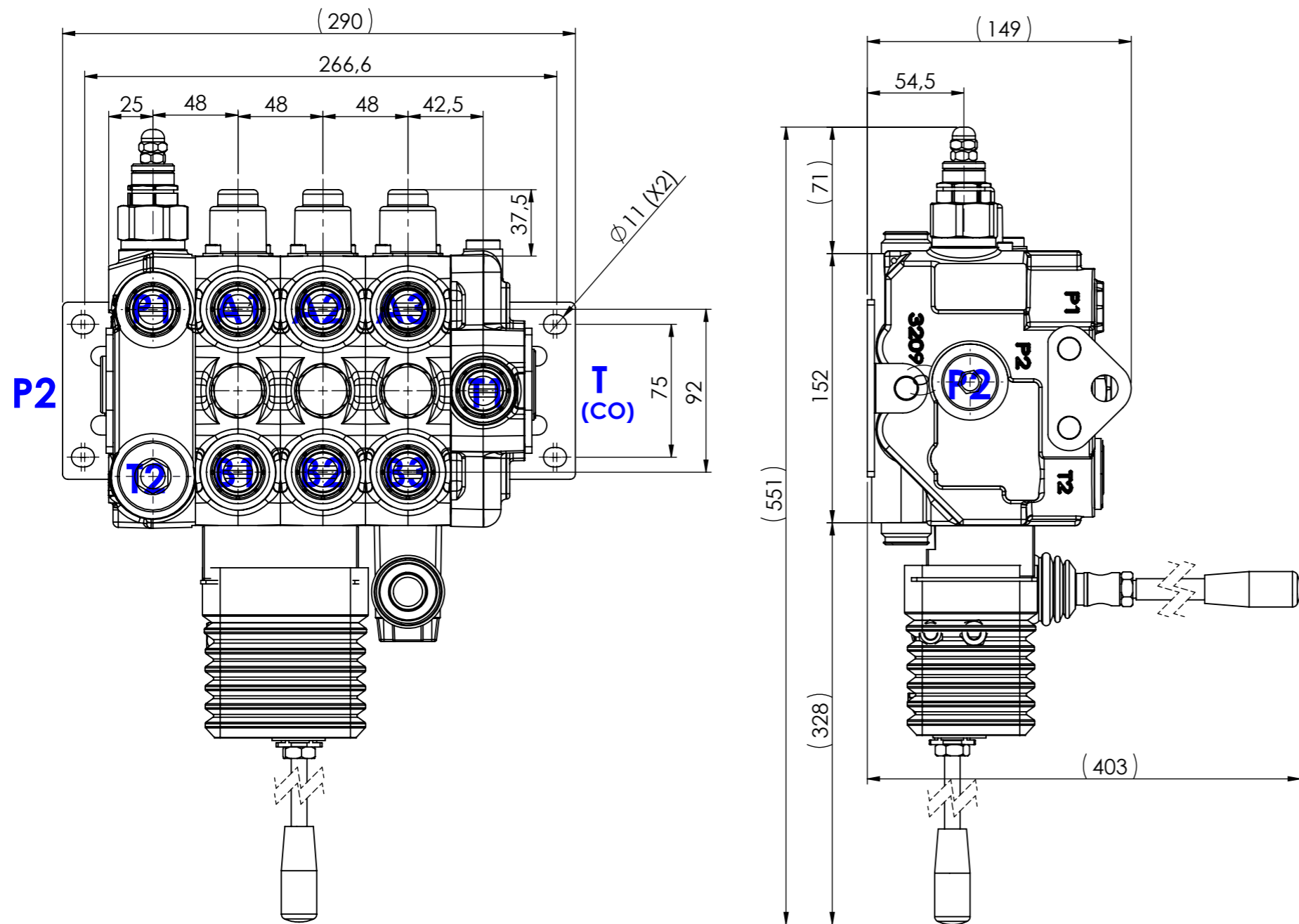
TECHNICAL SPECIFICATIONS:
 Number of spool : 3
 Nominal Flow : 100 lt/min
 Max. Flow : 130 lt/min
 Operating Pressure : 240 Bar
 Max. Work Pressure : 315 Bar
 Max. Back Pressure : 30 Bar

WORKING CONDITIONS:
 Recommended oil viscosity range : 10 cSt to 75 cSt
 Recommended oil filtering : $\beta_{10} \geq 75$
 Recommended fluid temperature range : -20 to +80
 Environmental temperature range : -20 to +80
 Max. contamination level :
 Class10 (NAS 1638)16/19 (ISO 4406)



VALF KV193
 /C-R(240)
 /CSC1ST1V19(A125)
 /CSC1ST1V13K7
 /CSC1ST1V7(A125B250)K7
 /C-H

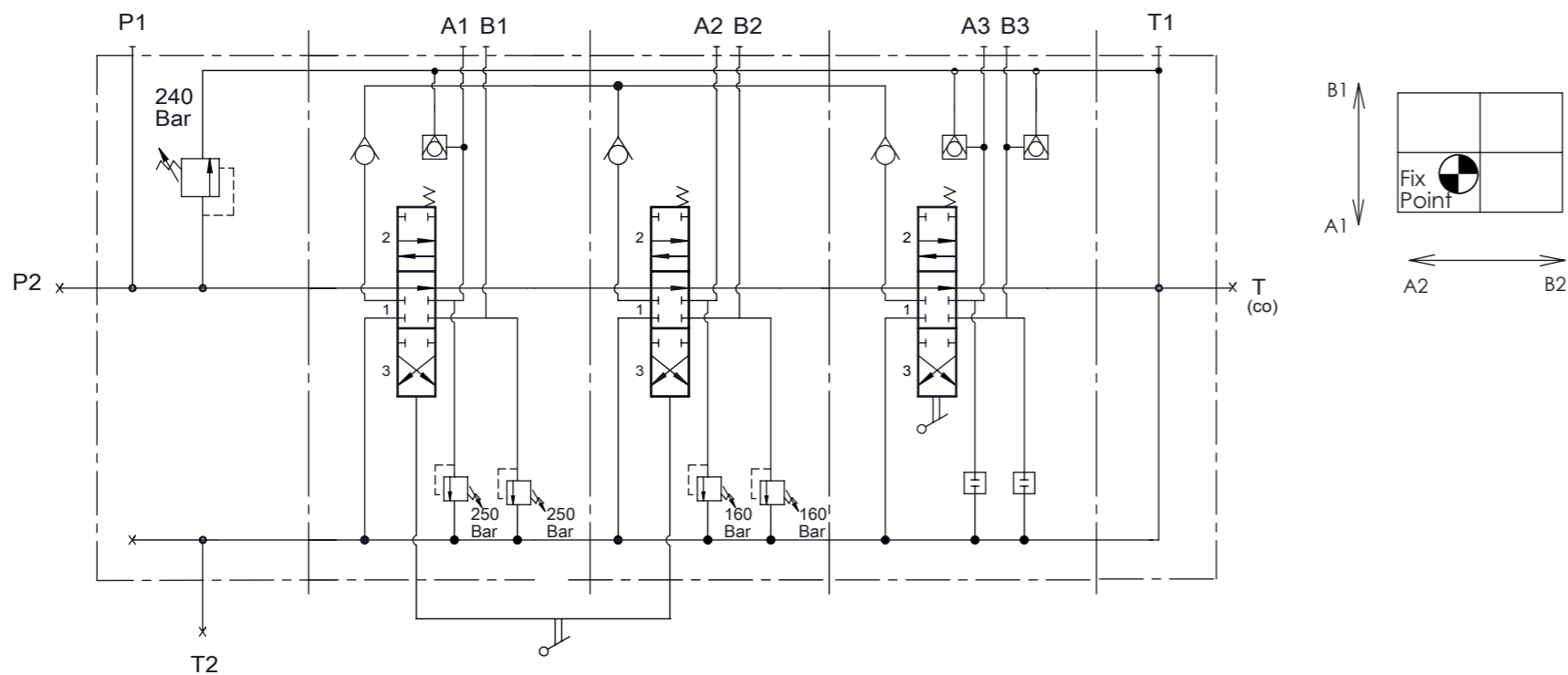




PORT SIZE:
P1, P2, T3, A-B : G3/4"
T1, T2 : G1"

TECHNICAL SPECIFICATIONS:
Number of spool : 3
Nominal Flow : 100 lt/min
Max. Flow : 130 lt/min
Operating Pressure : 240 Bar
Max. Work Pressure : 315 Bar
Max. Back Pressure : 30 Bar

WORKING CONDITIONS:
Recommended oil viscosity range : 10 cSt to 75 cSt
Recommended oil filtering : $\beta_{10} \geq 75$
Recommended fluid temperature range : -20 to +80
Environmental temperature range : -20 to +80
Max. contamination level :
Class10 (NAS 1638)16/19 (ISO 4406)



VALF KV193
/C-R(240)
/CSC1ST1V7(A250B250)K7
/CSC1ST1V7(A160B160)K7
/CSC1ST1V13
/C

