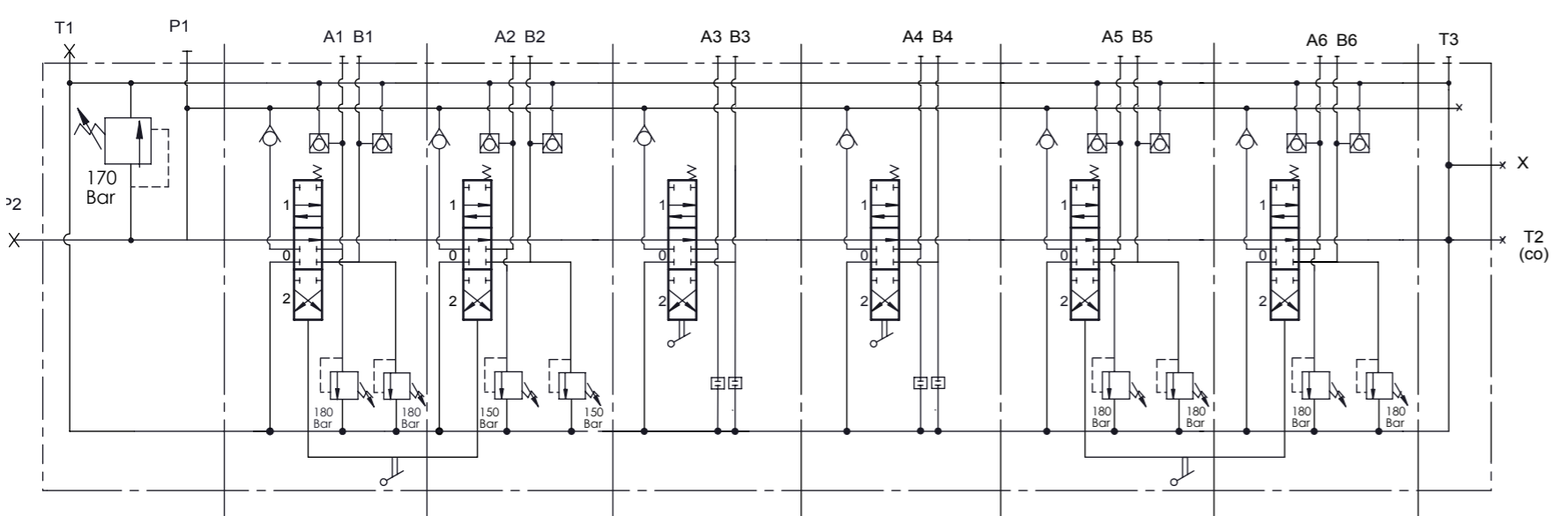
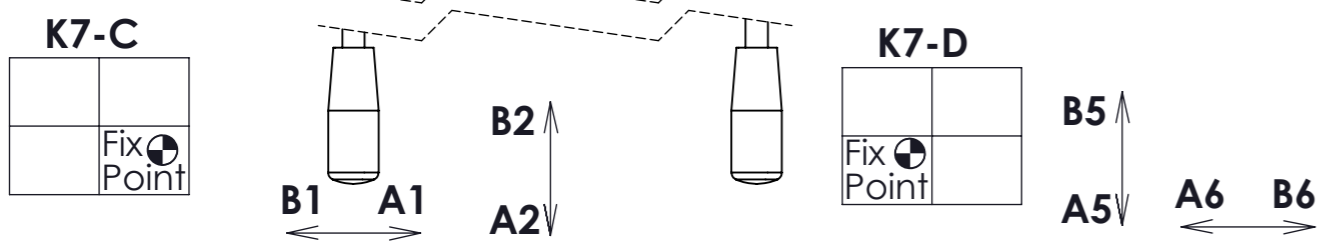


PORT SIZE:
 P1, P2, T1, A-B : G1/2"
 T2(co), T3 : G3/4"
 X : G1/4"

TECHNICAL SPECIFICATIONS:
 Number of spool : 6
 Nominal Flow : 70 lt/min
 Operating Pressure : 170 Bar
 Max. Operating Pressure : 315 Bar
 Max. Back Pressure : 30 Bar

TEST SPECIFICATIONS :
 Test with Petroleum SAE32 Hydraulic Oil at 40±2°C
 Main relief valve to be set 170 bar at 70lt min
 Under main relief valve pressure antischocks and anti-cavitations to be set at 70 lt/min

Leakage Rates
 Internal leakage of 4 to 10cc/min at 100 Bar 32cSt 40°C
WORKING CONDITIONS:
 Recommended Oil Viscosity Range : 10 cSt to 75 cSt
 Recommended Oil Filtering : β10 ≥ 75
 Recommended Fluid Tempe. Range : -20°C to +80°C
 Enviromental Temperature Range : -35°C to +60°C
 Max. Contamination : Class 10 (NAS 1638)
 19/16 (ISO 4406)



VALF KV176
 /IL-001(170)-B01
 /BSC1ST1V7(A180B180)K7
 /BSC1ST1V7(A150B150)K7
 /2XBSC1ST1V13K1
 /2XBSC1ST1V7(A180B180)K7
 /C

