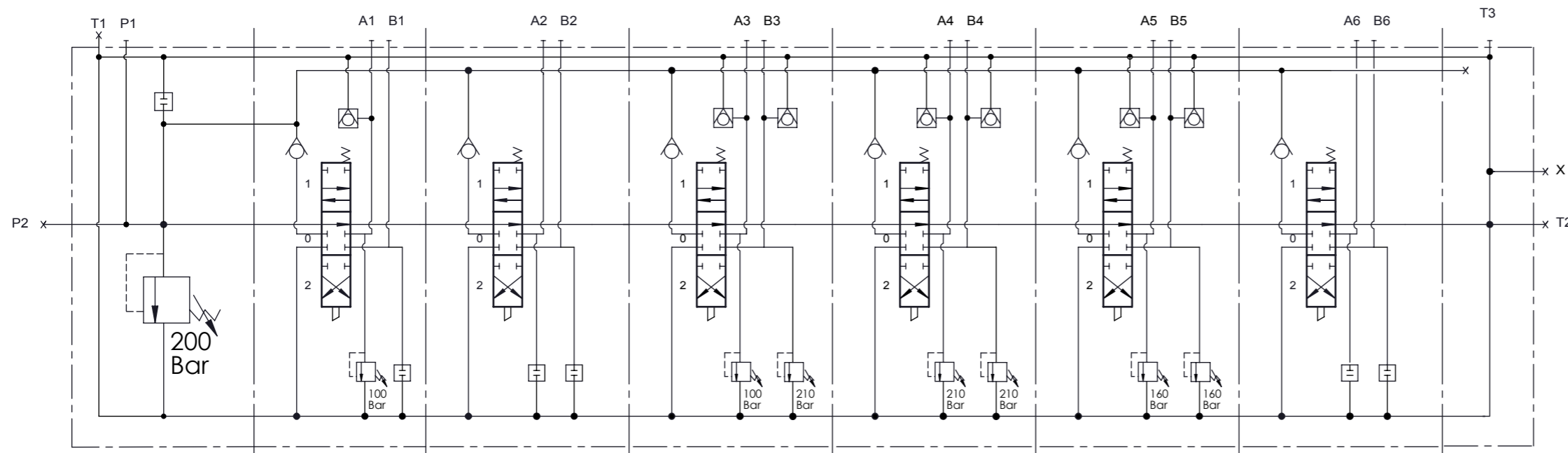


**PORT SIZE:**  
 P1, P2, T1, T2, T3, A-B : G3/4"  
 X:G1/4"

**TECHNICAL SPECIFICATIONS:**  
 Number of spool : 6  
 Max. Flow : 90 lt/min  
 Operating Pressure : 200 Bar  
 Max. Operating Pressure : 315 Bar  
 Max. Back Pressure : 30 Bar

**TEST SPECIFICATIONS :**  
 Test with Petroleum SAE32 Hydraulic Oil at 40±2°C  
 Main Relief Valve to be Set 200 Bar At 70 lt/min  
 All anti-cavitation and antishock relief valve  
 under main relief pressure to be set at 70lt/min.  
 Leakage Rates  
 Internal leakage of 4 to 10cc/min at 100 Bar 32cSt 40°C

**WORKING CONDITIONS:**  
 Recommended Oil Viscosity Range : 10 cSt to 75 cSt  
 Recommended Oil Filtering : β10 ≥ 75  
 Recommended Fluid Tempe.Range : -20°C to +80°C  
 Enviromental Temperature Range : -35°C to +60°C  
 Max.Contamination Level :Class 10 ( NAS 1638)  
 19/16(ISO 4406)



VALF KV176

