

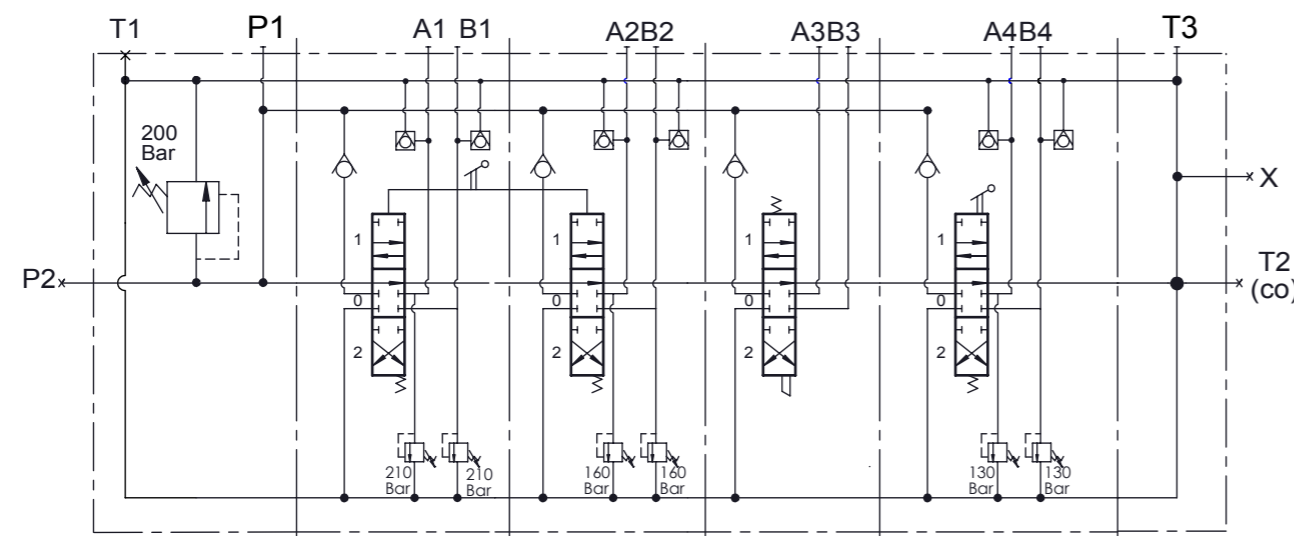
PORT SIZE:
P1, P2, T1, T2(co), T3, A-B : G3/4"
X : G1/4"

TECHNICAL SPECIFICATIONS:
Number of spool : 4
Max. Flow : 80 lt/min
Nominal Flow : 70 lt/min
Operating Pressure : 200 Bar
Max. Operating Pressure : 315 Bar
Max. Back Pressure : 30 Bar

TEST SPECIFICATIONS :
Test with Petroleum SAE32 Hydraulic Oil at 40±2°C
Main Relief Valve to be Set 200 Bar At 60 lt/min
Under Main Relief Valve pressure all anti-cavitations and antishocks to be set 200 Bar at 70lt/min.

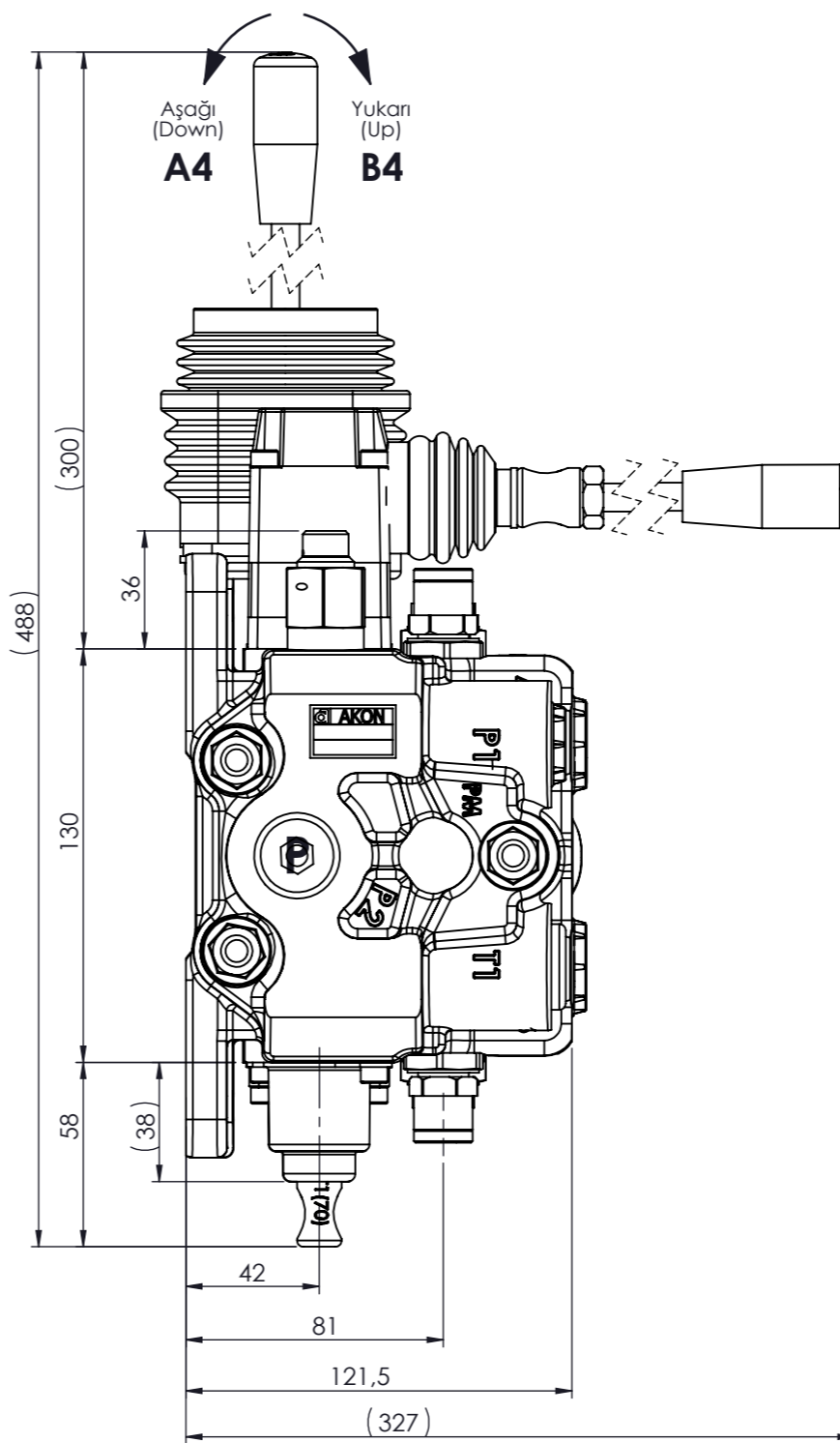
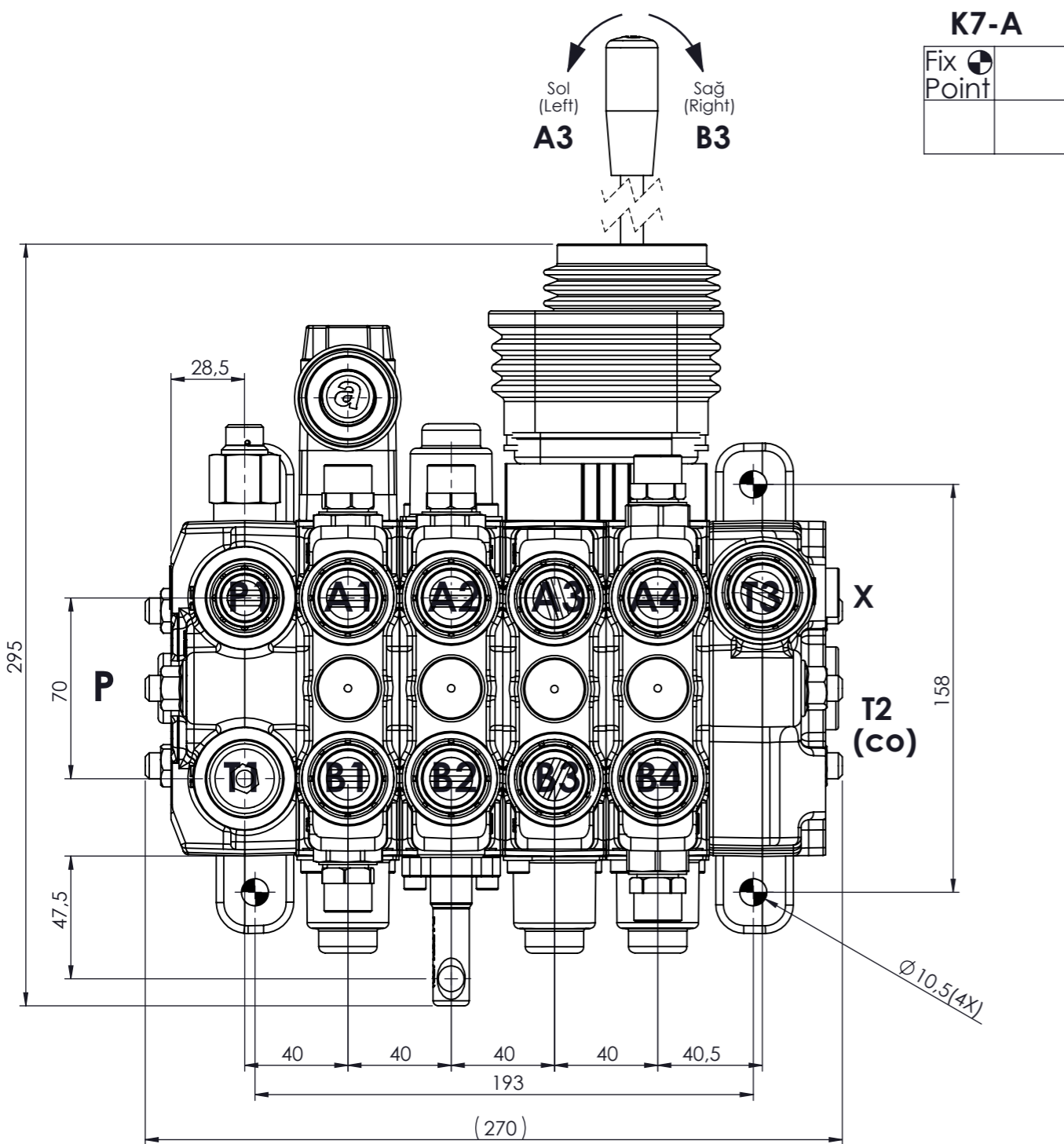
Leakage Rates
Internal leakage of 4 to 10cc/min at 100 Bar 32cSt 40°C

WORKING CONDITIONS:
Recommended Oil Viscosity Range : 10 cSt to 75 cSt
Recommended Oil Filtering : β10 ≥ 75
Recommended Fluid Tempe.Range : -20°C to +80°C
Environmental Temperature Range : -35°C to +60°C
Max.Contamination Level : Class 10 (NAS 1638)
19/16(ISO 4406)



VALF KV174
/IL-001-C01(200)
/CSC1ST1V7(A210B210)K7T
/CSC1ST1V7(A160B160)K7T
/CSC1ST1K3
/CSC1ST1V7(A130B130)T
/IC



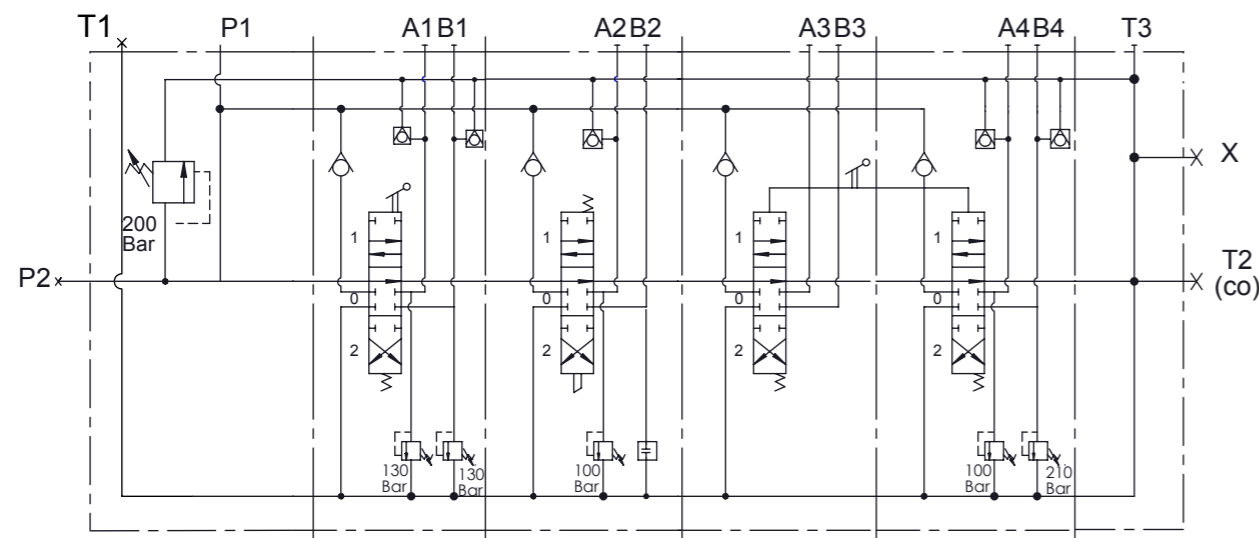


PORT SIZE:
P1, P2, T1, T2(co), T3, A-B : G3/4"
X : G1/4"

TECHNICAL SPECIFICATIONS:
Number of spool : 4
Max. Flow : 80 lt/min
Nominal Flow : 70 lt/min
Operating Pressure : 200 Bar
Max. Operating Pressure : 315 Bar
Max. Back Pressure : 30 Bar

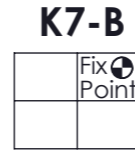
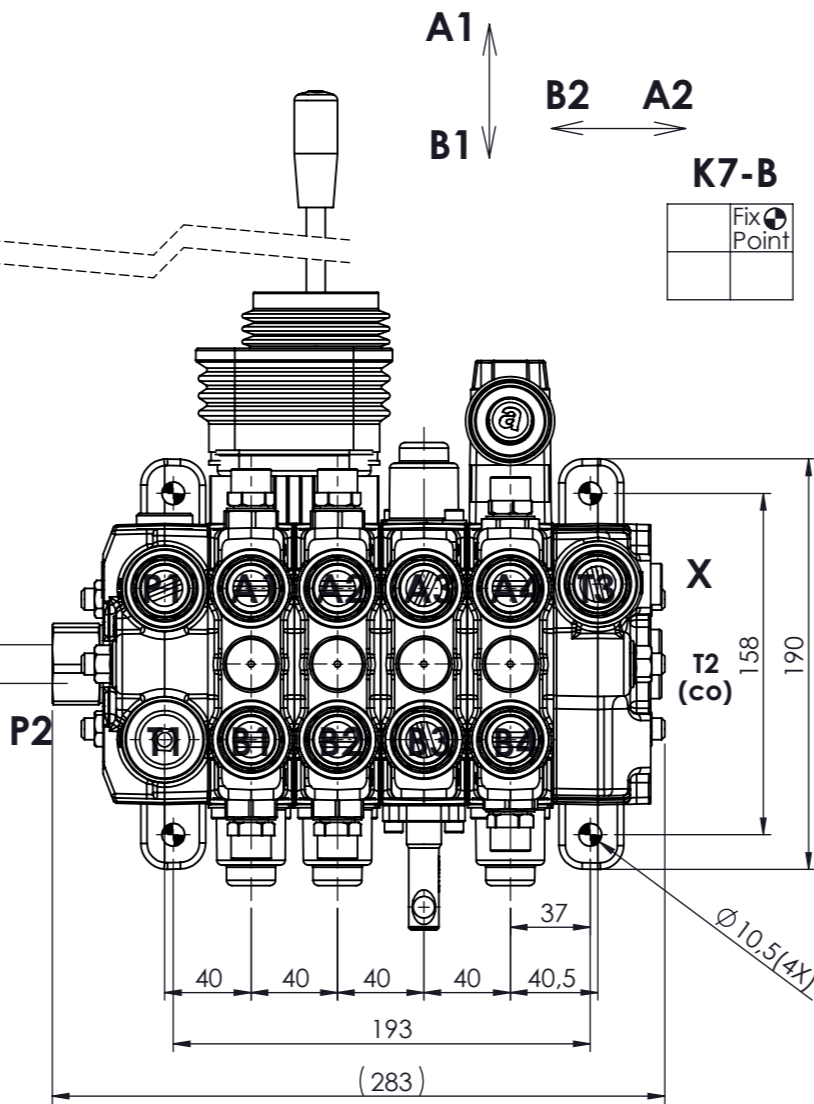
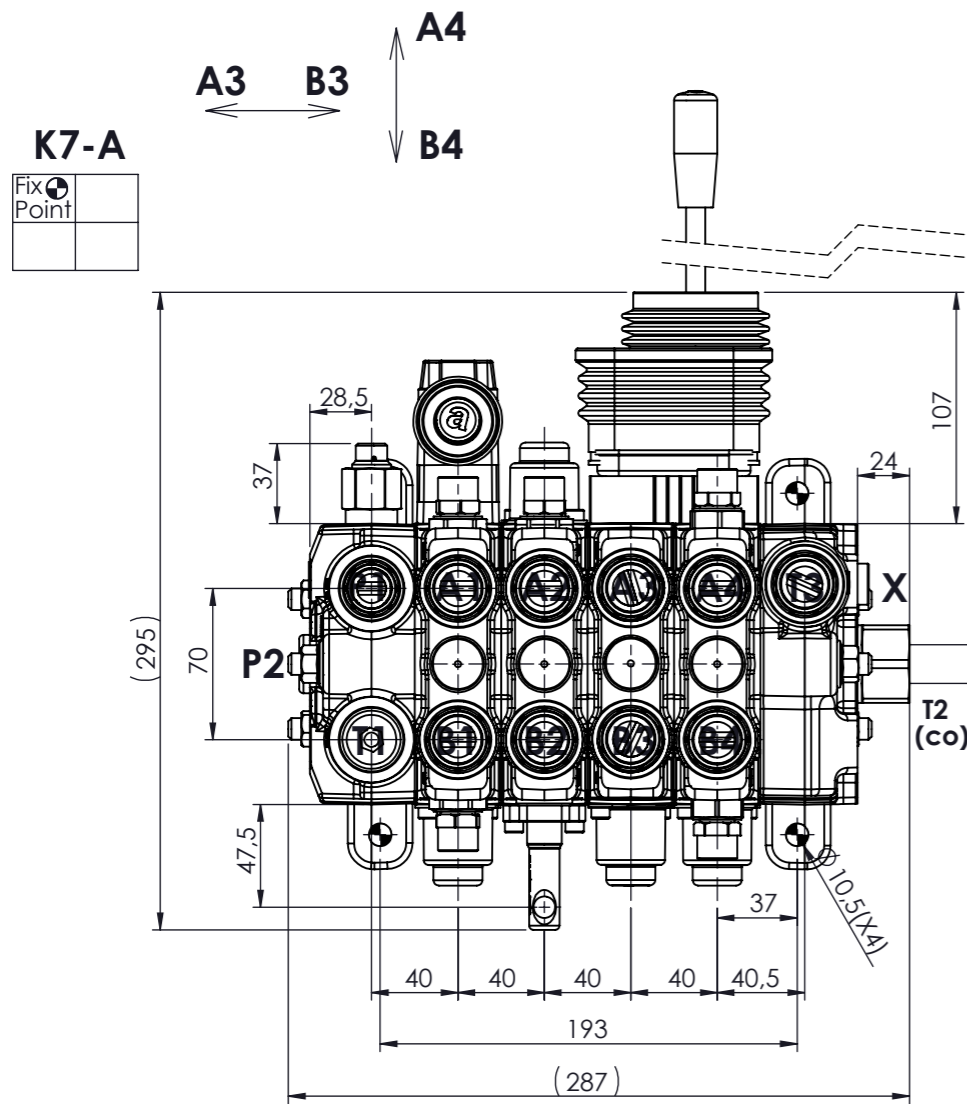
TEST SPECIFICATIONS :
Test with Petroleum SAE32 Hydraulic Oil at 40±2°C
Under Main relief valve pressure all anti-cavitations and anti-shock to be set 200 bar at 60 lt/min.
Leakage Rates
Internal leakage of 4 to 10cc/min at 100 Bar 32cSt 40°C (only spool leakage)

WORKING CONDITIONS:
Recommended Oil Viscosity Range : 10 cSt to 75 cSt
Recommended Oil Filtering : $\beta_{10} \geq 75$
Recommended Fluid Tempe.Range : -20°C to +80°C
Environmental Temperature Range : -35°C to +60°C
Max.Contamination Level : Class 10 (NAS 1638)
19/16(ISO 4406)



VALF KV174/IL-001 (200)-C01
/CSC1ST1V7(A130B130)T
/CSC1ST1V19(A100)K3
/CSC1ST1K7T
/CSC1ST1V7(A100B210)K7T
/C





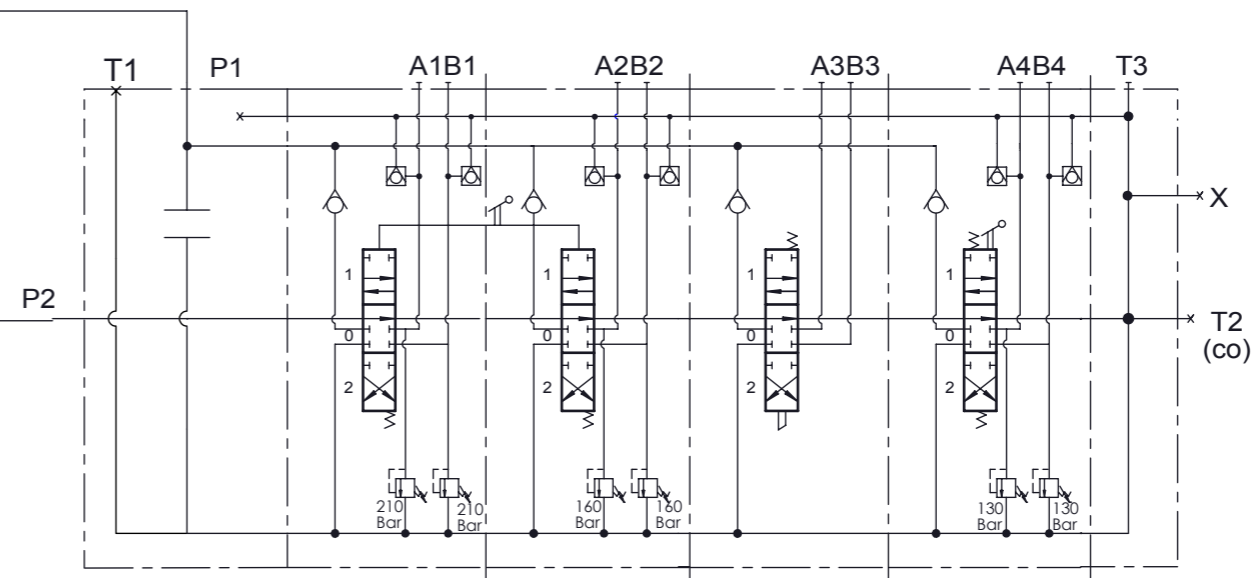
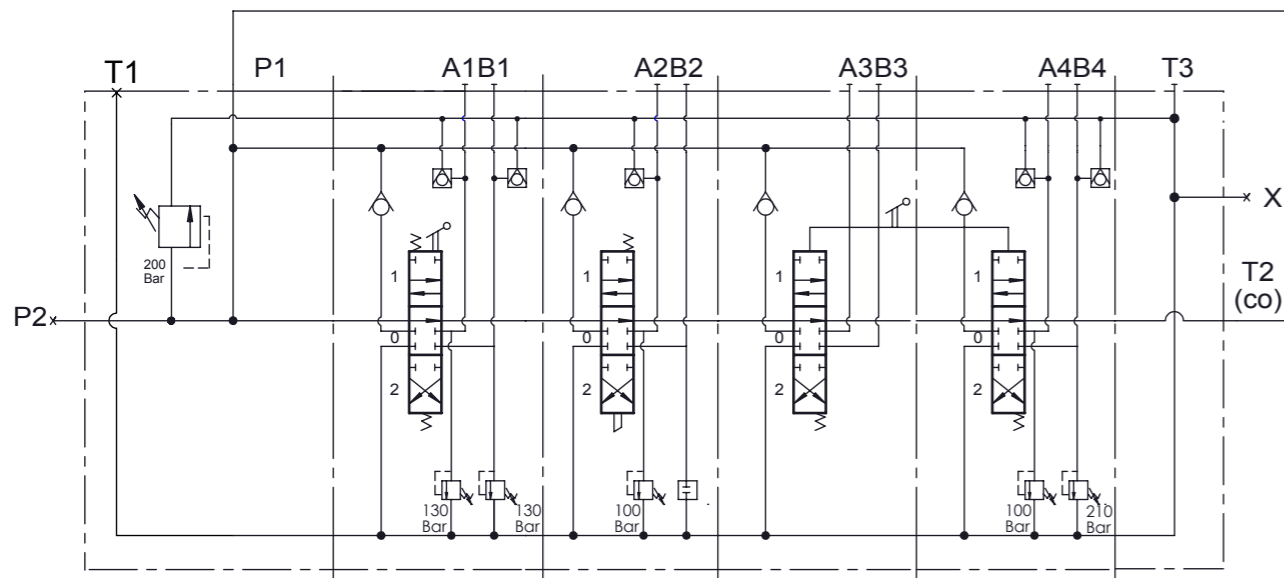
PORT SIZE:
P1, P2, T1, T2(co), T3, A-B : G3/4"
X: G1/4"

TECHNICAL SPECIFICATIONS:
Number of spool : 4
Max. Flow : 80 lt/min
Nominal Flow : 70 lt/min
Operating Pressure : 200 Bar
Max. Operating Pressure : 315 Bar
Max. Back Pressure : 30 Bar

TEST SPECIFICATIONS :
Test with Petroleum SAE32 Hydraulic Oil at 40±2°C
Main Relief Valve to be Set 200 Bar At 60 lt/min
Under Main Relief Valve pressure all anti-cavitation and antishock to be set 200 Bar at 60lt/min.

Leakage Rates
Internal leakage of 4 to 10cc/min at 100 Bar 32cSt 40°C (only spool leakage)

WORKING CONDITIONS:
Recommended Oil Viscosity Range :10 cSt to 75 cSt
Recommended Oil Filtering : β10 ≥ 75
Recommended Fluid Tempe.Range : -20°C to +80°C
Environmental Temperature Range : -35°C to +60°C
Max.Contamination Level :Class 10 (NAS 1638)
19/16 (ISO 4406)



VALF KV174
/IL-001(200)-C01
/CSC1ST1V7(A130B130)T
/CSC1ST1V19(A100)K3
/CSC1ST1K7T
/CSC1ST1V7(A100B210)K7T
/C-H

VALF KV174
/IL-002-C02
/CSC1ST1V7(A210B210)K7T
/CSC1ST1V7(A160B160)K7T
/CSC1ST1K3
/CSC1ST1V7(A130B130)T
/C

